

PSYCHOLOGY

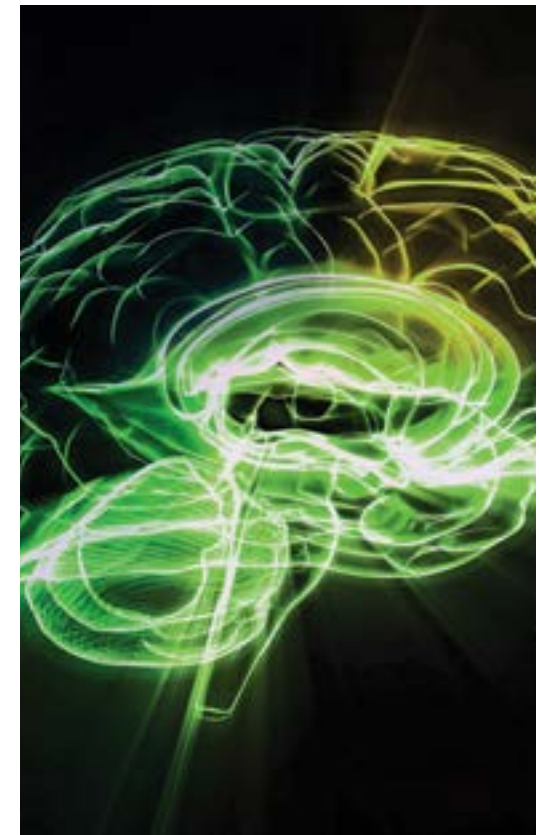
The Department of Psychology in the Faculty of Science and Technology offers an exciting and distinctive range of postgraduate courses in some of the most interesting areas of applied psychology. Each of our courses has been developed by a team of psychologists who are specialists in their area.

The first course of its kind in Europe, the Business Psychology MSc has established itself as a leader in the field and our graduates can be found all around the world, applying business psychology to a wide range of organisational and interpersonal issues. Our Health Psychology MSc has led the way in its emphasis on the evidence base for the discipline, and for its stimulating practice-related assessments.

The Psychology MSc provides the opportunity for you to pursue postgraduate study and develop a career in psychology, if your first degree was not a psychological discipline. We also welcome MPhil and PhD students, and provide expert supervision towards doctoral qualification.

The Department of Psychology has a strong reputation for postgraduate teaching. We aim to provide you with a supportive and interactive learning environment that equips you not only with theory and insights, but also with skills that can be applied in a professional setting. We gained the maximum possible mark in the last Quality Assurance Agency review of Psychology teaching, and many of our staff have been recognised for the quality of their teaching, with three winning prestigious national awards.

We believe strongly in maintaining close links between our teaching and research activities. You will be taught by active researchers who are passionate about sharing their enthusiasm for their subject area. Our vibrant research culture is distinctive for its openness, collaboration and interdisciplinary approach. We value and promote the interrelationship of research, enterprise, knowledge transfer and teaching activity.



The Health Psychology MSc and the Psychology MSc are accredited by the **British Psychological Society**



BUSINESS PSYCHOLOGY MSc

The aim of the Business Psychology MSc is to prepare graduates who can diagnose and communicate organisational and behavioural needs, design and implement business psychology interventions, and build strategic HR goals and programmes.

The emphasis is on equipping you with theoretical and analytical skills, as well as practical business psychology skills, in areas such as team building, conflict resolution, decision making, facilitation and organisational diagnostics.

Course content

You will gain knowledge and skills designed to enable you to work effectively within a wide range of interpersonal and multicultural situations, while formulating cost-effective solutions to operational HR problems.

The course has an outstanding professional development programme, one that runs in parallel with the taught schedule and which will bring you expertise from existing practitioners through workshops, seminars and mentoring.

Length of course: one year full-time or two years part-time, starting in September

Location: Central London (Cavendish)

Faculty: Science and Technology

Course fees and funding: see course web page and westminster.ac.uk/fees

Entry requirements: see page 216

For full and most up-to-date information, see course web page: westminster.ac.uk/business-psychology-msc

Core modules

- Conflict Resolution: Negotiation
- Contemporary Issues in Strategic Human Resource Management
- Facilitated Decision Making
- Business Psychology MSc Project
- Organisational Diagnostics: Tools and Approaches
- Teamwork for Effective Organisations

Associated careers

Business psychology employment opportunities for graduates continue to rise as organisations address performance and behavioural issues central to quality, innovation and competitiveness.

Management training and development companies are frequent employers of our graduates.



HEALTH PSYCHOLOGY MSc

Health Psychology plays a key role in improving the health and wellbeing of the population.

This course, based in the heart of London, was one of the first Masters in Health Psychology and has been accredited by the British Psychological Society (BPS) since 1999. It includes an innovative portfolio of assessments geared to developing transferable skills, and relating directly to the world of work.

The course also provides the opportunity to gain work experience and apply your knowledge in a health psychology setting, whilst considering future career plans. The course is taught by a core team of enthusiastic and supportive research-active staff, with collaborative links to external institutions in London and beyond. Successful completion of the course (Stage 1) is a prerequisite for the further training (Stage 2) to become a health psychologist registered with the Health Professions Council (HPC).

In addition to the core taught programme, we work with a range of practitioners to provide additional professional training in areas such as resilience, coaching and applied practice.

Course content

The course will give you an in-depth understanding of the theoretical and applied bases of health, illness and disease. The main aim is to help you to develop the theoretical and methodological skills essential for conducting independent research and applying health psychology in practice.

We provide a coherent programme of study covering the content, methods and application of health psychology. In particular, the course emphasises the importance of an evidence-based approach to health psychology, and develops the core skills needed for Stage 2 training. Within the core modules, there is considerable flexibility for you to choose particular areas of study of interest.



Length of course: one year full-time or two years part-time, starting in September

Location: Central London (Cavendish)

Faculty: Science and Technology

Course fees and funding: see course web page and westminster.ac.uk/fees

Entry requirements: see page 216

For full and most up-to-date information, see course web page: westminster.ac.uk/health-psychology-msc

Core modules

Core modules include two introductory modules:

- Health Psychology: A Lifespan Development Perspective
- Theories and Perspectives in Health Psychology

Followed by:

- Data Handling and Research Methods for Applied Psychology
- Health Psychology in Practice
- Individual Differences, Health, Stress and Illness
- Research Based Project: Health Psychology
- Specialist Topics for Applied Psychology

Option module

- Work Experience in a Psychological Setting

Professional recognition

This course is accredited by the British Psychological Society (BPS).

Associated careers

The course is a prerequisite for those wishing to pursue Stage 2 training leading to Registration with the HPC as a Health Psychologist. However, it also serves as a precursor to those wishing to pursue a PhD in Psychology, and other areas of applied psychology such as clinical or counselling. The majority of our graduates work in the health-related professions.

PSYCHOLOGY MSc

This BPS-accredited conversion course is designed for graduates who wish to pursue a career in psychology but need to acquire the Graduate Basis for Chartered Membership (GBC) of the British Psychological Society (BPS).

You do not need to have studied psychology to be eligible for this programme. However, you should note that it is an intensive course and requires hard work and independent study outside the contact hours – full-time study is full-time.

We welcome applications from graduates with Upper Second Class degrees who have either completed a degree in another subject or who have insufficient psychology in their degree to be eligible for GBC.

Course content

You will take modules at Masters level in core areas of psychology, as specified by the BPS. You will also take one option module in psychology from a selection available within the department.

We offer a work experience in psychology module as an option for those who would like to gain valuable experience in the work place.

The content of the curriculum of the MSc covers the core areas of psychology stipulated by the BPS for GBC. This consists of Cognitive Psychology, Developmental Psychology, History and Philosophy of Psychology, Individual Differences, Empirical Project, Psychobiology, Qualitative and Quantitative Research Methods, and Social Psychology. In all of the modules there is a strong emphasis on critical evaluation of theory and practice.

Length of course: one year full-time or two years part-time, starting in September

Location: Central London (Cavendish)

Faculty: Science and Technology

Course fees and funding: see course web page and westminster.ac.uk/fees

Entry requirements: see page 216

For full and most up-to-date information, see course web page:
westminster.ac.uk/psychology-msc

Core modules

- Developmental and Differential Psychology
- Fundamentals of Psychology
- Project for Psychology MSc
- Psychobiology and Cognitive Psychology
- Qualitative Research Methods
- Quantitative Research Methods
- Social Psychology and Conceptual Issues in Psychology

Option module

You will choose an option from Masters level courses within the Department of Psychology, subject to availability and timetable constraints.

A practice-based option module is Work Experience in a Psychological Setting for MSc students. Other options may change each year, but currently include: Individual Differences: Health, Stress and Disease; and Psychology Literature Project (critically evaluating the literature on a chosen topic).

Professional recognition

This course is accredited by the British Psychological Society (BPS).

Associated careers

Graduate Basis for Chartered Membership (GBC) is the first step towards becoming a Chartered Psychologist.

It is the prerequisite for progression to Postgraduate professional training in psychology and subsequent registration as a Chartered Psychologist working in any of the fields of professional psychology – including clinical, counselling, educational, occupational, and health psychology. It is a requirement for Masters and Doctorate courses in Psychology that lead to professional qualifications such as Doctorates in counselling, Clinical and Educational Psychology, and Masters courses in Organisational/Occupational Psychology.

