

PSYCHOLOGY

The Department of Psychology has a vibrant culture of research which is distinctive for its openness, collaboration and interdisciplinarity. As a psychology student you will be based in the heart of London; you will benefit from our central location with its unrivalled range of library, archive and cultural resources, as well as its social diversity. You will also be able to take advantage of our excellent teaching, learning and technical facilities, including laboratories, observation facilities, computer-based teaching laboratories, research cubicles, and a workshop and resource centre.

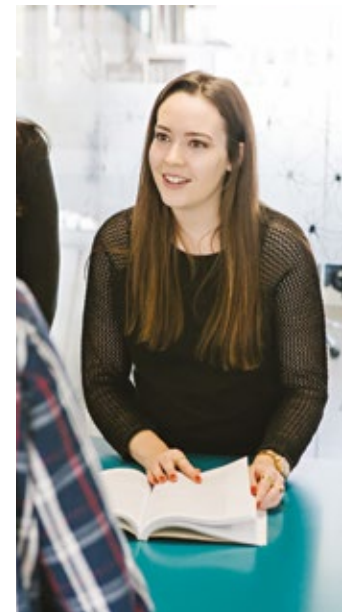
Teaching and learning

We believe strongly in maintaining close links between our research and teaching, which means that you will be taught by international experts in psychology – active researchers who are passionate about their subject and staff who have won prestigious awards for their teaching.

As a student, you'll have the option of taking modules that cover the full breadth of psychology and that offer you a unique learning experience. We also provide an optional work placement year, giving you the opportunity to gain workplace experience in a psychology or cognitive and clinical psychology-related setting in the UK or abroad.

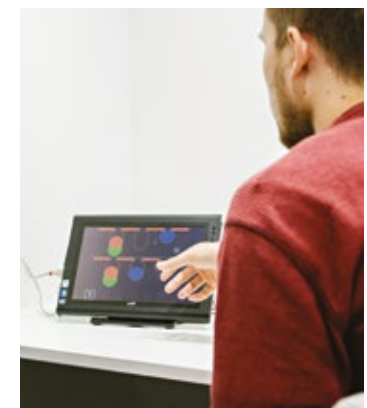
Employability

Our graduates have taken up careers in business psychology, clinical psychology, counselling, forensic psychology and health psychology. Many use their skills in related professions including education, healthcare, human resources, market research, public relations and social work. Additionally, a significant proportion of our graduates use their BSc in Psychology or Cognitive and Clinical Psychology as a platform to earn Masters and Doctorate degrees en route to pursuing their career of choice.



100%
continuation
rate for
Cognitive
and Clinical
Psychology
students at
the end of their
first year

Data from HESA



See also: Biomedical Sciences p56 • Biosciences p62

Psychology facilities at Cavendish Campus

COGNITIVE AND CLINICAL PSYCHOLOGY BSc HONOURS

Length of course: Three years full-time, or four years with work placement

UCAS code: B140

Campus: Cavendish (See p20)

Typical offer for September 2016: A Levels – BBB, to include one science subject from Physics, Chemistry, Biology or Maths; International Baccalaureate – 32 points, including a minimum of 5 in one Higher Level science subject (can include Maths and Psychology); Edexcel BTEC Level 3 Extended Diploma in Applied Science – DDM. See also entry requirements on p197.



This exciting interdisciplinary degree considers how the structure and function of the brain gives rise to mental processes. The Cognitive and Clinical Psychology BSc Honours blends experimental, applied and theoretical aspects of psychology with neuroscience, and draws from physiological psychology, comparative psychology, cognitive psychology, clinical neuropsychology and psychopharmacology.

Delivered by a passionate and research-active faculty, this unique course places a particular focus on brain-behaviour relationships, bringing together evidence from molecular and cellular neuroscience, brain injury and neurological illness investigations, and evolutionary and developmental cognition studies. It explores a wide range of research-based and clinically relevant methodologies including brain imaging, computational modelling and behavioural cognition. During the degree, you will consider all aspects of cognitive functioning, from perception, attention, learning and memory through to concepts such as communication systems, intelligence and consciousness.

For module information and further details, please visit: westminster.ac.uk/psychology



PSYCHOLOGY BSc HONOURS

Length of course: Three years full-time; four years full-time with work placement

UCAS code: C801

Campus: Cavendish (See p20)

Typical offer for September 2016: A Levels – BBB; International Baccalaureate – 32 points; Edexcel BTEC Level 3 Extended Diploma – DDM. See also entry requirements on p197.



This course offers an exciting and unique learning experience, where you will be taught by recognised international experts and active researchers who are passionate and knowledgeable about their subject. We are committed to understanding the place of psychology in contemporary society, and our course content is constantly updated to provide a fresh perspective into the human mind.

The course is also designed to enhance your employability after graduation, and many of our past students have pursued careers in clinical, counselling, forensic or occupational psychology, or related professions, including human resources, management, market research, PR and social work. Students who achieve at least a Lower Second Class Honours degree and pass their project will also be eligible for the Graduate Basis for Chartered Membership of the British Psychological Society, the first step towards becoming a Chartered Psychologist.

For module information and further details, please visit: westminster.ac.uk/psychology



"The best things about the course so far are the range of option modules to choose from, the fact that the lecturers and staff are always on hand to help, and that with this course we always have psychologists coming in to give talks."

Sabah Hakeem
Psychology BSc Honours, second year

