

PSYCHOLOGY

Psychology at Westminster has a vibrant culture of research which is distinctive for its openness, collaboration and interdisciplinarity. As a psychology student you will be based in the heart of London; you will benefit from our central location with its unrivalled range of library, archive and cultural resources, as well as its social diversity. You will also be able to take advantage of our excellent teaching, learning and technical facilities, including laboratories, observation facilities, computer-based teaching laboratories, research cubicles, and a workshop and resource centre.

Teaching and learning

We believe strongly in maintaining close links between our research and teaching, which means that you will be taught by international experts in psychology – active researchers who are passionate about their subject and staff who have won prestigious awards for their teaching. As a student, you'll have the option of taking modules that cover the full breadth of psychology and that offer you a unique learning experience. We also provide an optional work placement year, giving you the opportunity to gain workplace experience in a psychology or cognitive and clinical psychology-related setting in the UK or abroad. Students who successfully complete the work placement year will graduate with either a Psychology BSc with Professional Placement, Psychology and Counselling BSc with Professional Placement or Cognitive and Clinical Neuroscience BSc with Professional Placement. We encourage our students to study abroad and students can choose to spend a year at one of the University's partner institutions. Students who take this study abroad option will graduate with a Psychology BSc with International Study or Cognitive and Clinical Neuroscience BSc with International Study.

Employability

Our graduates have taken up careers in business psychology, clinical psychology, counselling, forensic psychology and health psychology. Many use their skills in related professions including education, healthcare, human resources, market research, public relations and social work. Additionally, a significant proportion of our graduates use their BSc as a platform to earn Masters and Doctorate degrees en route to pursuing their career of choice.

Foundation pathway

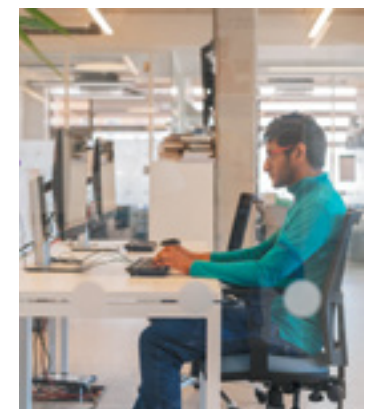
We offer Foundations as a route onto some of our undergraduate programmes. For module information and any further details, please visit:

westminster.ac.uk/foundation-courses

See also: Biomedical Sciences p60 • Biosciences p64



100%
of our Cognitive
and Clinical
Neuroscience
graduates are in
work or further
study within
six months of
graduating



Psychology facilities at Cavendish Campus

Data taken from westminster.ac.uk in December 2018



PSYCHOLOGY FOUNDATION YEAR

UCAS codes:

- Psychology with Foundation BSc Honours C803
- Psychology and Counselling with Foundation BSc Honours C804

Campus: Central London (see map p206)

Entry requirements: A Levels – DDE/CDD; International Baccalaureate – 24 points; BTEC Extended Diploma – MPP/MMPP; BTEC Diploma – MM/DM. Overseas students require IELTS of 6.0 overall, with 5.5 in each component. See also p198.

Our degree courses with Foundation year offer the opportunity to prepare you for advanced study before you progress onto a full honours degree at the University of Westminster. Whether you do not feel ready for degree-level study, don't have the right qualifications, want to change your subject specialism or return to study after an absence from education, we aim to encourage a broad range of students to undertake our Foundation year in order to progress onto their full honours degree with us.

The Foundation year is designed to give you the opportunity to explore new ideas, opening up new perspectives on the key debates within your chosen field. Core modules accelerate your academic and professional development, bringing together like-minded students to think about the 'big ideas' within your discipline. You will also take modules from areas closely related to your chosen field, giving you the chance to develop a cross-disciplinary perspective on your course.

On successful completion of the Foundation year, you will be able to move on the first year of your chosen undergraduate degree.

For module information and further details, please visit: westminster.ac.uk/psychology

COGNITIVE AND CLINICAL NEUROSCIENCE BSc Honours

Length of course: Three years full-time, or four years with professional placement or international study option

UCAS code: B140

Campus: Central London (see map p206)

Entry requirements: A Levels – BCC/ABB to include one science subject from Biology, Chemistry, Maths, Physics or Psychology; International Baccalaureate – 27 points including a minimum of 5 in one Higher Level science subject (can include Maths and Psychology); BTEC Extended Diploma – DMM/DDM in Applied Science; BTEC Diploma – D*D/D*D* to include one science subject from Biology, Chemistry, Maths, Physics or Psychology. Overseas students require IELTS of 6.0 overall, with 5.5 in each component. See also p198.

For full and most up-to-date information, see course web page: westminster.ac.uk/psychology



This exciting interdisciplinary degree course considers how the structure and function of the brain gives rise to mental processes while it interacts with its physical, social, and cultural environment. Cognitive and clinical neuroscience blends theoretical, experimental and applied aspects of psychology with neuroscience, and overlaps with other psychological disciplines including physiological, cognitive and clinical psychology, developmental science and psychopharmacology, as well as neuroanthropology.

Delivered by a passionate and research-active faculty, this unique course places a particular focus on brain-behaviour relationships, bringing together evidence from molecular and cellular neuroscience, brain injury and neurological illness investigations, and evolutionary and developmental cognition studies. It explores a wide range of research-based and clinically relevant methodologies including brain imaging, computational modelling and behavioural cognition. During the degree, you will consider all aspects of cognitive functioning, from perception, attention, learning and memory through to concepts such as communication systems, intelligence and consciousness.

Towards the end of the second year students can choose to take a work placement or study abroad year leading either to a Cognitive and Clinical Neuroscience BSc with Professional Placement or a Cognitive and Clinical Neuroscience BSc with International Study.



PSYCHOLOGY BSc Honours

Length of course: Three years full-time, or four years with professional placement or international study option

UCAS code: C801

Campus: Central London (see map p206)

Entry requirements: A Levels – BCC/ABB; International Baccalaureate – 27 points; BTEC Extended Diploma – DMM/DDM; BTEC Diploma – D*D/D*D*. Overseas students require IELTS of 6.0 overall, with 5.5 in each component. See also p198.

For full and most up-to-date information, see course web page: westminster.ac.uk/psychology



This course offers an exciting and unique learning experience, where you will be taught by recognised international experts and active researchers who are passionate and knowledgeable about their subject. We are committed to understanding the place of psychology in contemporary society, and our course content is constantly updated to provide a fresh perspective into the human mind.

The course is also designed to enhance your employability after graduation, and many of our past students have pursued careers in clinical, counselling, forensic or occupational psychology, or related professions, including human resources, management, market research, PR and social work. Students who achieve at least a Lower Second Class Honours degree and pass their project will also be eligible for the Graduate Basis for Chartered Membership of the British Psychological Society, the first step towards becoming a Chartered Psychologist. Towards the end of the second year students can choose to take a work placement or study abroad year leading either to a Psychology BSc with Professional Placement or a Psychology BSc with International Study.



“Studying at Westminster has been amazing! Staff are incredibly supportive and classes are interactive and engaging. As a placement student, I have experienced the most rewarding year of my life. I have achieved things I never thought I could.”

Aminah Cheema
Psychology BSc Honours, graduate
Nationality: British

PSYCHOLOGY AND COUNSELLING BSc Honours

Length of course: Three years full-time, or four years with professional placement or international study option

UCAS code: C802

Campus: Central London (see map p206)

Entry requirements: A Levels – BCC/ABB; International Baccalaureate – 27 points; BTEC Extended Diploma – DMM/DDM; BTEC Diploma – D*D/D*D*. Overseas students require IELTS of 6.0 overall, with 5.5 in each component. See also p198.

For full and most up-to-date information, see course web page: westminster.ac.uk/psychology



This course provides you with a broad contemporary education in psychology and counselling within a vibrant, global learning environment situated in the heart of London. The course team includes qualified and practising counsellors and psychotherapists who are passionate about sharing their experience, knowledge and skills of therapy.

In addition to psychology, you will study counselling and psychotherapeutic theories and approaches, and you will have the opportunity to develop practical skills such as active listening and effective questioning. This course is also designed to help you to think creatively and critically, developing the problem-solving skills that will enable you to apply psychology and counselling to address a wide range of personal, professional and societal needs. Upon graduation, you will be suitably equipped to embark on professional training in counselling psychology and psychotherapy, as well as to work in a wide range of professional settings.



“Early introductions to the core psychology elements and a foundation for the counselling side too really help make my aspirations a lot clearer, as I am able to gain career-related insight and advice from the teaching staff. Staff are incredibly helpful and friendly.”

Samaha Rawshan Chowdhury
Psychology and Counselling BSc Honours, student
Nationality: British