



UNIVERSITY OF  
WESTMINSTER

LET'S  
MAKE IT  
HAPPEN

POSTGRADUATE  
PROSPECTUS 2026

# TOGETHER,

**Turn your ambition  
into reality at  
the University of  
Westminster, a global  
university with London  
energy and home to  
endless opportunities.**

# LET'S MAKE IT HAPPEN



**“Whatever your goal or ambition, we’re here to help you make it happen.”**

# WELCOME TO WESTMINSTER

Welcome to Westminster – where discoveries are made, diversity is celebrated and everyone is welcome.

Our diverse community and unique location in one of the world’s most dynamic, creative and innovative cities make us a truly global university with London energy.

We help every student to achieve their potential by providing personalised, practice-based education, developed in collaboration with industry partners. Our teaching is practical and responds to a rapidly changing world with courses that are employer-driven and enriched by research. Our expert, professional teaching colleagues are committed to delivering high-quality learning experiences to equip you with the skills and knowledge you need to succeed.

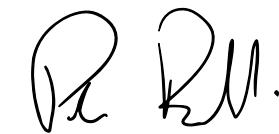
You’ll have access to an extensive range of career development opportunities including job skills training, award-winning mentoring schemes, and business and freelance start-up support for aspiring

entrepreneurs – available during your studies and after graduation.

We’ll support you every step of the way with comprehensive student services, sports facilities and social clubs to help maintain your health and wellbeing, build networks and make lifelong friends.

Whether you study full- or part-time, you’ll be part of a vibrant, welcoming community where you can bring your whole self and feel a true sense of belonging.

Our students achieve remarkable things, thriving professionally and making a difference locally and globally. Whatever your goal or ambition, we’re here to help you make it happen.



**Professor Peter Bonfield OBE FREng**  
Vice-Chancellor and President



# LONDON, HOME TO OPPORTUNITY AND DISCOVERY

London is ranked among the top student cities in the world by the QS Best Student Cities 2026, attracting people from all over the world to live, work and study. It offers outstanding career opportunities and rich cultural experiences, with plenty of green spaces.

At Westminster you will find a diverse community of innovators, thinkers and problem-solvers working in partnership with an extensive network of businesses and professional organisations to provide first-class education and excellent opportunities to connect with employers.

This vibrant and exciting city has been our home since 1838.

## EMPLOYMENT



## CULTURE



## PARKS AND GREEN SPACES





# LONDON, WHERE LEARNING COMES TO LIFE

Thanks to our central London locations you will be fully immersed in the city's business community. Our courses are developed in collaboration with industry and enriched by events, visits, live projects and guest speakers. We work with leading institutions such as the Tate, the BBC, the NHS and the British Film Institute to give you a vibrant, inspirational learning experience.

**WORLD-LEADING FINANCIAL CENTRE  
AND BUSINESS HUB**

**RICH HERITAGE WITH WORLD-CLASS  
MUSEUMS AND GALLERIES**

**GLOBAL CENTRE FOR ARTS,  
MUSIC AND CREATIVE INDUSTRIES**

**EASY TRAVEL THROUGHOUT  
THE UK AND EUROPE**



# OUR AND CAMPUSES FACILITIES

## REGENT CAMPUS



## Little Titchfield Street Site

## HARROW CAMPUS



Three of our campuses are in the heart of the city and our Harrow Campus in north-west London is only 25 minutes away by Underground (metro) from central London.

## CAVENDISH CAMPUS



- Our innovative learning and lecture spaces include:
- purpose-built art, design, photography, film and TV studios
  - our historic Regent Street Cinema
  - world-class audio recording studios
  - state-of-the-art scientific and specialist laboratories including cyber security, forensics and gaming labs
  - dedicated, modern architecture studios
  - a vibrant, fully equipped, 50-seater arts space.

We are home to one of the UK's largest single-site Bloomberg terminal installations (Bloomberg, 2025). Students can also access the cutting-edge Fabrication Laboratory (FabLab) with 3D printers and laser cutters.

When you are ready to relax there are cafes and coffee shops, gyms, a sports ground, prayer and quiet rooms. The University of Westminster Students' Union organises everything from club nights to sports, networking and social events for you to get involved, develop new skills and meet friends.

## MARYLEBONE CAMPUS



[CLICK FOR MORE INFORMATION ABOUT OUR CAMPUSES](#)



# STEP THROUGH INTO ZONE

The home of student career success.

Zone29, our new destination for enterprise and career success, is a vibrant, inclusive, physical and digital space that connects students with the world of business and the wider community.

Opening in 2026 and located next to our Marylebone Campus, Zone29 provides resources, connections and guidance to help you achieve your career goals.



## Step up and step in

Whether you're starting your career, changing direction, wanting to move to the next level, or starting your own business, you'll have all the support you need to achieve your career goals during your studies and for up to three years after you graduate. Make Zone29 your gateway to all career-related activities, including looking for a part-time job, getting work experience or deciding what to do after graduation.

[CLICK FOR MORE INFORMATION](#)

## Get career ready

We offer personalised support to help you plan your career path including one-to-one appointments, interview coaching, help to find a mentor, feedback on CVs and applications and so much more.

## Find a job or gain experience

We can help you to find a job, work experience or a placement in the UK or overseas. You will be invited to join networking, industry-specific events and careers fairs. We can also help you apply for volunteering and part-time roles that build confidence, enhance your skills and fit around your studies.

## Start or grow your own business

Get expert support to develop your entrepreneurial skills, start a business or explore self-employment. We're proud to have been shortlisted for the Outstanding Entrepreneurial University Award 2024 by the Times Higher Education.

## Support for international students

We offer dedicated tools and resources to help international students succeed in the UK and global job market.

**"The Future Ready Mentoring scheme, Westminster Working Cultures and Talent Bank give you an insight into life after uni and how you can shape the career you envision for yourself."**

**MAYA BASCOMBE**  
Software Engineering MEng

**ZONE ** | **UNIVERSITY OF WESTMINSTER **



# ZONE 29 CONNECTING WITH BUSINESS

Our strong ties with the business community shape our courses to give you the skills and experience employers need in London and beyond.

Many of our courses are professionally accredited, feature guest speakers, visits to organisations in the UK and abroad and provide opportunities to work on live briefs set by businesses. And our academics collaborate with organisations to deliver cutting-edge research and innovation projects. See research pages 27–30.

As a leading provider of work-based learning, we offer a range of programmes to help you build your skills and enhance your career prospects, so you stand out:

- Westminster Award – build your CV and develop interpersonal skills
- Employer Networking Events – meet employers and members of professional bodies
- Westminster Working Cultures – gain insights into the career paths of professionals in a variety of roles and industries in the UK and abroad, thanks to support from our amazing network of alumni and partners
- WeNetwork – unlock your entrepreneurial skills to start a business or explore self-employment.

## Stay connected with the Westminster alumni community

Your connection to Westminster does not end at graduation. As part of our vibrant alumni community, you will continue

to have access to Zone29 and enjoy a range of benefits including career support for up to three years, discounts on further study and invitations to networking and social events, both online and at our Zone29 offices in central London.

Stay engaged and make the most of opportunities to connect with other graduates, businesses and the wider community.

## Continuing Professional Development

Your professional growth does not stop after graduation. As an accredited Continuing Professional Development (CPD) provider, we offer a wide range of flexible short courses to help you expand your skills, strengthen your career prospects and stay ahead in a fast-evolving world. Delivered online, on campus or at your workplace, our courses are designed to fit around your schedule and meet the needs of professionals at every stage of their career.

Discover more at [westminster.ac.uk/workforce-development](https://westminster.ac.uk/workforce-development)

ZONE  29

UNIVERSITY OF  
WESTMINSTER 





# MEET OUR GRADUATES

Our former students go on to doing amazing things – building exciting careers and making a real difference in their communities, both locally and internationally. Whatever your ambitions, we're here to help you get there.

## Why did you choose to study at Westminster?

I wanted to study journalism at a reputable university in London. My course was very practical and I learnt the fundamentals of journalism, radio and TV production that led me to obtain my first media job in news programmes at the BBC World Service.

## Tell us about your current role at the BBC

I work as a journalist at BBC Verify where I analyse photos and videos to assess their veracity for use in news programmes. I also find and interview members of the public to hear their experiences in relation to the news agenda and breaking news stories.

## How did the course prepare you for working in the media industry?

Through my studies, I learnt what makes a great news story, how to write them for radio bulletins and how to record and edit audio material. Having a good grounding in

journalism gave me a head start when it came to acquiring work experience as a reporter – a two-week placement at BBC Radio Suffolk. That in turn led me to get my first role in news journalism.

## What opportunities at Westminster helped you break into the industry?

Westminster has a close relationship with the nearby BBC, and during my studies, placements were arranged at BBC local stations across the country which was amazing!

On my first day at BBC Suffolk, I was given a map, a car, and sent to conduct an interview, then edit it for the evening bulletin. It was nerve-racking, especially as I didn't know the area, but great experience. I also volunteered at hospital radio and produced shows on community radio, further building my broadcast experience and demonstrating my commitment to the media industry.



## What was the most valuable part of your studies?

I learnt interviewing, recording and editing techniques so that I could create content for output from its inception to the final product. It showed future employers my capabilities and gave me the confidence to work as a news journalist.

**ANDRÉE MASSIAH**  
Studied Multimedia Journalism MA and  
now works as a journalist at BBC Verify.





# SUPPORTING YOU TO SUCCEED

We celebrate the energy and creativity of our diverse student community. Whether you are joining us from overseas or returning to study, our Student Centre and your personal tutor are here to support you at every step.

As a full-time student you will be assigned a personal tutor to help you reach your academic and personal potential. You can speak to them about any matter affecting your studies, and your personal tutor can connect you with our specialist support services.

## Learning support

Our practical courses and tutorials available online and in person will help you develop essential academic skills such as essay and report writing, research, referencing and how to use the library effectively.

## Digital skills

Access free, high-quality online courses to explore your interests and stay ahead of digital developments. Courses include video editing, how to improve your LinkedIn profile and artificial intelligence.

## Disability support

If you have a disability or condition that may affect your studies, our specialist advisers can give advice on how to access buildings, provide specialist technology and arrange adjustments for coursework, assessments and exams.

## Wellbeing and health services

Our highly trained counsellors and advisers are available to support your physical, mental and emotional wellbeing.

We offer confidential counselling, mental health first aid and workshops throughout the year, as well as referrals to external services.

## Faith and spirituality

Open to students of all faiths and none, our team offers a welcoming and compassionate space for you to explore your spiritual wellbeing and receive confidential support. You will find prayer and contemplation rooms across our campuses.

## Physical and online resources

Our libraries offer a wide range of books, journals and e-resources to support your studies and research. Our team also helps you build key skills in research, referencing, academic writing and study techniques. The University hosts the renowned Westminster Menswear Archive, a world-class collection dedicated to the study of menswear design.

## Accommodation

Westminster has a selection of student accommodation with modern facilities and a vibrant community. Our team can assist with finding a place in University halls or provide advice on private housing, including help with tenancy agreements and dealing with landlords. We recommend you apply early.

Please visit the website for information:  
[westminster.ac.uk/accommodation](https://westminster.ac.uk/accommodation)



## Sport and leisure

The University of Westminster Students' Union (UWSU), run for students by students, organises social events and supports over 100 societies, which are free to join. Getting involved with the Students' Union can help you build transferable skills such as teamwork and leadership.

We also offer free access to sports clubs and fitness classes at our well-equipped gyms and leisure facilities. Whether you're new to sport or compete at a high level, we encourage everyone to stay active for better physical and mental wellbeing.

For details of our extensive careers support, step into Zone29. See pages 11–14.

For details of our tailored support for international students, see page 21.

**“Thank goodness for the support assistant in the research methods labs who helped build my confidence with my quantitative skills. I got a distinction for the module in the end!”**

**ANJALEE CHAKRAVARTY-AGBO**  
Studied Health Psychology MSc



# MEET OUR GRADUATES

Former students talk about their experience.



My journey began because I decided to switch from software engineering to securing technological systems. I researched universities that would provide state-of-the-art teaching, environment and exposure to the cybersecurity industry. Among all I came across, the University of Westminster was the only one to offer an MSc degree accredited by the British Computer Society (BCS) and certified by the National Cyber Security Centre (NCSC).

This was my best decision ever. I loved everything about Westminster, including the diversity of culture on campus. As a student from Ghana I never felt out of place, and the University was in the heart of London. I had fun, attempted karate, played volleyball and attended fun networking events. You'll learn to love the UK as a second home with all of its culture and top-notch teaching services, and if you happen to be in London, ride the iconic red London buses.

**MERCILINA LAMPTEY**  
Studied Cyber Security and Forensics MSc



**FABIA HANNAN MONE**  
Studied Global Public Health Nutrition MSc

The course I studied is accredited by Association for Nutrition (AfN) and career-focused. Our course leader connected us with incredible organisations such as WHO, World Public Health Nutrition Association (WPHN), the International Organisation for Migration (IOM) part of the UN and the NHS. The modules taught real-world skills like designing public health policies and campaigns.

Westminster offers fantastic academic and career-focused opportunities. I was a runner-up in the Big Idea Competition 2023 and the first student from my course to win the Global Bursary for a summer course at the University of Groningen.

This course bridges the gap between the classroom and careers! I secured internships and now work as a Population Health Fellow tackling health inequality.

**LEROY MORGAN**  
Studied Music Business Management MA

Studying at Westminster allowed me to intern at Runabeat Music, collaborate on projects with my thesis supervisor and gain essential experience working with independent artists. I was also honoured to receive a Music Publishers Association scholarship as a 2025 NXT Gen Scholar.

The friendships and social experiences – laughter, shared challenges, meetups and gatherings – have been the most memorable part of my student life in London. The diversity of the city has also been a highlight, allowing me to meet people from all over the world, experience different cultures and expand my perspective.

My advice is to network as much as possible! Connect with like-minded individuals, whether that's students, staff members, academics or industry professionals and seize every opportunity – you never know.





# GLOBAL UNIVERSITY, LONDON ENERGY

Welcome to our vibrant, diverse community in the heart of London. Each year, students from over 160 countries come to study for a career-focused degree and enjoy London's exciting cultural and social life. And, as a graduate, you will belong to a worldwide network of over 180,000 alumni.

## Support for international students

We offer lots of support to help you make the most of your experience, succeed in your studies and feel at home. This includes:

- pre-departure and offer holder events to help you prepare to come to the UK
- access to an exclusive online platform to meet other offer holders from around the world before you arrive
- assistance with finding a University residence or alternative accommodation
- information about enrolment and student support services
- welcome sessions and social events for international students with a chance to meet staff and other students
- student societies representing diverse nationalities and interests
- specialist career support, including careers fairs, work placements, volunteering and mentoring opportunities.

We also offer courses in study skills and academic English, along with pre-sessional English courses to improve your language skills before you arrive. To find out more, visit [westminster.ac.uk/international/english-language-support](https://westminster.ac.uk/international/english-language-support)

## Scholarships and discounts

We offer a range of postgraduate scholarships for both home and international students. Westminster alumni may also be eligible for a 20% discount on tuition fees for selected Master's courses. Terms and eligibility criteria apply. For details, visit [westminster.ac.uk/study/fees-and-funding](https://westminster.ac.uk/study/fees-and-funding)

## Pre-Master's courses

We partner with Kaplan International Pathways to provide preparatory courses for students who still need to meet the entry requirements. The options available are Pre-Master's for Business, Law and Social Sciences or Science and Engineering. These courses are taught at the Kaplan International College at London Bridge and will enhance your academic skills and subject knowledge, and raise your English to the required level for postgraduate study. Successful completion guarantees a place on your chosen postgraduate degree.

To find out more and apply, visit [kaplanpathways.com/universities/university-of-westminster](https://kaplanpathways.com/universities/university-of-westminster) and for information on alternative Pre-Master's qualifications, visit [westminster.ac.uk/international/university-preparation-courses](https://westminster.ac.uk/international/university-preparation-courses)

## Semester postgraduate Study Abroad programme

This programme allows students to gain international experience while studying in their home country. The credits you earn for the modules or internship completed at Westminster are transferred to your home degree. For more information, visit [westminster.ac.uk/study-abroad](https://westminster.ac.uk/study-abroad)

To hear from our current international students visit our blog at [westminster.ac.uk/international](https://westminster.ac.uk/international) or follow our social channels.



## Finding the right agent

We work with representatives around the world, who can help you apply. For details visit [westminster.ac.uk/international/your-country](https://westminster.ac.uk/international/your-country)





# MEET OUR GRADUATES

## Why did you choose to study at Westminster?

I was really excited about Westminster's Marketing Communications programme as it was ranked among the best in the country at the time. I also loved the campus, its central location, and how close it was to all of London's famous landmarks. Coming from abroad, studying in the city centre was incredibly exciting.

## Did the course meet your expectations?

Very much so! Having completed my undergraduate studies in Egypt, I was truly impressed by the quality of the teaching, the curriculum, the mentorship and the real-time relevance of the projects throughout the course. By the end of it, I knew exactly what I wanted to do with my career – it really deepened my passion for marketing.

## What made you start your own company?

I've always wanted to run my own business, ever since I was a little girl. My first business was a marketing agency, born from my love of marketing, and with an agency, no two days are ever the same because you're working with multiple clients. I love that variety and I learnt a lot on the job.

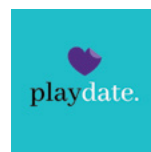
With my second company, Playdate, the motivation was more personal. As a single

parent, I found it really difficult to meet people. Frustrated with the lack of options, I decided to take matters into my own hands and created the UK's first dating app for single parents. Little did I know it would be so well received!

## How would you describe the teaching and learning experience?

What really impacted me was that at Westminster, the academics encouraged independent thinking and problem-solving. I remember my thesis was on destination marketing and I chose to focus on a popular tourist destination in Egypt. During that year, as I was nearing the completion of my thesis, a terrorist attack occurred at the same resort.

I remember panicking and telling my dissertation professor that I couldn't continue and would need to quickly choose another topic. Instead, he asked me to address the situation in real time and propose a plan for managing the crisis. It forced me to dive into crisis management immediately! I learnt so much from that experience, and it was all because I was pushed to challenge myself.



**NEVINE COUTRY**  
Studied Marketing  
Communications MA  
and is the Founder  
and CEO of Playdate,  
the UK's first dating  
app for single parents





# EDUCATION THAT WORKS FOR YOU

Our high-quality teaching is informed by internationally recognised research and strong industry links. We aim to transform students of all backgrounds into resilient, knowledgeable graduates, who are adaptable, ambitious and ready to make a positive impact on the global future.

We focus on teaching practical skills and addressing real-world issues, while also emphasising critical thinking and job readiness.

Many courses are accredited or recognised by leading professional bodies. Students are offered personalised and flexible ways of learning and digital skills are integrated throughout our courses.

By collaborating with students, employers and the community, we strive to make education inclusive and accessible, breaking down barriers to success.

## Find a course structure that meets your needs:

### Full-time study

Courses start in September or January. Expect to attend university for lectures or seminars at least two days a week during the academic year (31 weeks). Each course is assessed differently but is likely to include coursework and an extended project or dissertation.

### Part-time study

Daytime or evening classes are available in most subjects. A part-time degree typically takes at least two years, attending two sessions each week of the academic year plus six to twelve hours of personal study each week.

Some employers may support you to study by day release. Please note that part-time study is not available for students requiring a Student visa.

### With professional experience

Some courses include an integrated work placement or internship in the UK or abroad. These full-time degrees are completed over two years.

### Postgraduate certificate and postgraduate diploma

Our Master's degree courses are based on completing credit-bearing modules. You can transfer credits to other courses or institutions.

We also offer LLM, MBA and MArch degrees. Please visit the website for details.

### Professional development and short courses

As an accredited CPD training provider, we deliver short, specialist courses in areas such as project management, data analytics and digital marketing strategy.

Visit [westminster.ac.uk/workforce-development](https://www.westminster.ac.uk/workforce-development) for details.





# RESEARCH WITH IMPACT

Building on our pioneering past, colleagues and students come together in our research and knowledge exchange endeavours to find solutions to make a difference for our communities and for the world.

We engage with government, businesses, the public and local communities, disseminating and applying knowledge through collaborating with partners both nationally and internationally.

Our four research communities focus on building knowledge and sparking change in some of the most important areas of human activity. These communities are:

- Arts, Communication and Culture
- Diversity and Inclusion
- Health Innovation and Wellbeing
- Sustainable Cities and the Urban Environment

Our innovative research is recognised as world-leading, both inside and outside academia – 72% of our research has been deemed to be world-leading (4\*) or internationally excellent (3\*) according to the 2021 Research Excellence Framework (REF).



## THE GRADUATE SCHOOL

As a doctoral researcher at Westminster, you will belong to an academic school and research group. But you will also be a member of a much wider community of researchers through our Graduate School – a vibrant, high-quality, inspiring and globally engaged research environment.

Developing the next generation of researchers is a key priority for the University, and our Graduate School is vital to this aim. The School is a thriving home for our doctoral researchers and provides a stimulating Doctoral Researcher Development Programme benchmarked to national and international standards.

Through the Graduate School, you can become highly regarded in your field of expertise, both nationally and internationally, and enhance your future professional life and career development.

We will support your development into a confident, highly skilled and well-rounded researcher through:

- a series of tailor-made workshops and specialist skills sessions – the Doctoral Researcher Development Programme
- developing connections with subject-leading research experts and dedicated professional service support staff.

Our students have an excellent experience. Overall satisfaction was 83% in the most recent Postgraduate Research Experience Survey (PRES) 2023, demonstrating our commitment to helping you succeed in your doctoral research.

For more information, visit [westminster.ac.uk/research-degrees](https://westminster.ac.uk/research-degrees)



# RESEARCH THAT MAKES A DIFFERENCE

At the University of Westminster, we believe in research with purpose. Our academic community is passionate about solving real-world problems and creating a more inclusive, sustainable future. Many of our students go on to become leading researchers in their fields – transforming knowledge into impact.

## Exploring the Frontiers of Quantum Biology



Dr Ifigeneia Kalampouka published research during her Master's at Westminster and was later awarded a PhD studentship through the University's partnership with The Guy Foundation and the Science and Technology Facilities Council. Her work on building a photonic detector – technology that can sense even single photons – has major implications for biology and medicine.

This interdisciplinary project between life scientists and physicists has helped establish Westminster as one of the few UK universities with a dedicated quantum biology lab, led by Professor Jimmy Bell and Professor Louise Thomas.

## Tackling Global Malnutrition



Dr Ihab Tewfik is internationally known for his work in clinical nutrition to support vulnerable communities in low- and middle-income countries. His research has led to successful nutrition interventions for undernourished schoolchildren in Ghana, cancer patients in India, and people living with HIV in Nigeria.

Dr Tewfik's international collaborations have secured PhD studentships for his team, enabling them to conduct fieldwork and design evidence-based solutions that improve lives and promote long-term health.

## Advancing Gender Equality and Peacebuilding



Dr Juweria Ali completed her PhD in Politics at Westminster and is now a postdoctoral research fellow at the Centre for the Study of Democracy (CSD). In 2024, she was awarded the prestigious British Academy's ODA Global Innovation Fellowship for her project Gender, Armed Conflict and Peacemaking in the Somali Region, Ethiopia. Working in partnership with

international NGO Conciliation Resources, Dr Ali is investigating how female ex-combatants and survivors can be better integrated into peacebuilding efforts.

Her research supports the United Nations Sustainable Development Goals (SDGs), especially Goal 5: Gender Equality and Goal 16: Peace, Justice and Strong Institutions. Dr Ali's work is supported by Professor Nitasha Kaul, who encourages early career researchers to aim high and create meaningful global change.

## Creating Sustainable Solutions for a Greener Planet



Dr Pooja Basnett, now a Senior Lecturer in the School of Life Sciences, began her academic journey at Westminster with a Master's in Medical Biotechnology, followed by a PhD supported by the Cavendish Scholarship and has recently been promoted to Reader. Her pioneering research explores how bacteria can be used

to produce biodegradable plastics, offering nature-based alternatives to reduce plastic pollution.

Dr Basnett founded the Cavendish Living Lab, where students from across disciplines work together on sustainability projects – growing food on campus, building hydroponic systems and designing eco-friendly materials for fashion. This hands-on environment gives students a unique opportunity to develop creative, practical responses to today's environmental challenges.



# STUDYING ON A BUDGET

A postgraduate degree is an investment in your future, often leading to around a 12% higher salary compared to those with an undergraduate degree\*. Beyond career progression and financial reward, you will gain a global professional network, lasting friendships and the skills to achieve more than you had ever thought possible.

## Funding your degree

Before applying, you need to plan how you are going to support yourself financially during your studies.

## Postgraduate Master's loan

Student Finance England (SFE) offers loans, which can be used towards tuition fees or maintenance costs. For more information visit [westminster.ac.uk/postgraduate-student-funding](https://westminster.ac.uk/postgraduate-student-funding)

## Scholarships

We offer scholarships for UK and international students. In most cases you need to apply for the scholarship before the start of the course. For more information visit [westminster.ac.uk/scholarships](https://westminster.ac.uk/scholarships)

## Alumni tuition fee discount

Former students remain part of our global community and enjoy continued benefits, exclusive services and access to Zone29. Westminster alumni may also be eligible for a 20% discount on tuition fees for selected Master's courses. Terms and eligibility criteria apply. For details, visit [westminster.ac.uk/alumni-benefits](https://westminster.ac.uk/alumni-benefits)

## Managing your budget

Before you arrive, research your expected costs and get information to help you plan your budget by attending our informative events and using the resources we provide. Money-saving tips and student discounts can be found on various websites.

Our careers team will help you find part-time work to supplement your income while you study. We offer financial advice and a number of bursaries for current students.

We are working to keep costs as low as possible:

- free breakfast and affordable lunches
- free clubs and societies
- free gyms and sports facilities.

Consider asking your employer for support or look at what funding is available from charities and trusts. For more information on managing your money visit [westminster.ac.uk/student-finance/managing-your-money](https://westminster.ac.uk/student-finance/managing-your-money)

\*Source: Graduate Labour Market Statistics 2024





# OUR SUBJECT AREAS

The following section lists the courses we offer. Most courses are available full-time (FT) and some are available part-time (PT). For the most up-to-date information on the course structure, course modules, fees and entry requirements, visit [westminster.ac.uk/course-search](http://westminster.ac.uk/course-search)

### Campus teaching locations

While the main location for each course is listed on the following pages, some teaching and other activities may take place at other University campuses.

Accounting and Finance.....	34	Criminology.....	43
Architecture, Interiors and Planning.....	35	Data Science and Informatics.....	44
Art, Design and Visual Culture.....	37	Economics.....	45
Biological and Biomedical Sciences.....	39	English and Creative Writing.....	46
Business and Management.....	40	Fashion.....	47
Computer Science and Engineering.....	41	Film and Television.....	49
Construction, Surveying and Real Estate.....	42	Languages.....	50
		Law.....	51
		Marketing.....	52
		Media and Communication.....	53
		Music.....	54
		Nutrition and Public Health.....	55
		Politics and International Relations.....	56
		Psychology.....	57
		Tourism and Events Management.....	58
		Transport and Logistics.....	59



The global financial services industry is rapidly advancing through technology and digital transformation. To keep pace with these changes, our innovative and challenging courses are developed in close collaboration with employers and professional bodies. Working with industry-leading organisations such as the CFA Institute, the Chartered Institute for Securities & Investment (CISI) and the Association of Chartered Certified Accountants (ACCA) helps us provide the distinctive skill set you need to meet the demands of tomorrow's job market. The University is a CFA University Affiliation Program Partner. Westminster Business School is recognised as a CISI Centre of Excellence.

Our courses are designed to enhance the value of a Master's academic qualification with professional skills. They draw on the teaching excellence and research expertise of our academic and professionally qualified staff. Additionally, we continue to invest in financial technology resources in our two state-of-the-art Bloomberg Financial Market Suites, giving you the chance to experience technology and data widely adopted by leading global investment banks in the world's major financial centres.

The skills and knowledge gained on our courses will open up a range of opportunities in different accounting and finance careers. These include management and financial accounting and reporting, auditing, stockbroking, private equity, finance and tax consultancy, FinTech, and investment and risk management.

Recent graduates have found employment at organisations including Amazon, Deloitte, Citibank, the Financial Conduct Authority, PricewaterhouseCoopers, Santander, Société Générale and the World Economic Forum.

For full and most up-to-date information, see our website: [westminster.ac.uk/accounting-and-finance](http://westminster.ac.uk/accounting-and-finance)

“What truly sets Westminster apart is the access to academics with real-world industry experience who also serve as dedicated mentors.”

**HEMANTH VALLAMKONDA**  
International Finance and Banking MSc

**Campus for all courses:**  
Marylebone

**Accounting and Finance MSc**  
**Duration:** 1 year FT  
**Start:** September and January  
*Pending accreditation from Association of Chartered Certified Accountants (ACCA) and the Chartered Institute of Management Accountants (CIMA). See website for details.*

**International Finance and Banking MSc**  
**Duration:** 1 year FT  
**Start:** September and January  
*This course is accredited by the Chartered Banker Institute (CBI).*

**FinTech with Business Analytics MSc**  
**Duration:** 1 year FT  
**Start:** September and January

**Investment and Financial Risk Management MSc**  
**Duration:** 1 year FT  
**Start:** September and January  
*This course is pending accreditation from the Chartered Institute of Securities and Investment (CISI) and acknowledged by the Chartered Financial Analyst (CFA) Institute.*

Professional bodies accrediting or recognising our courses include:







# ARCHITECTURE, INTERIORS AND PLANNING

We foster a collaborative learning environment where collective intelligence shapes an ethical, experimental curriculum that challenges conventional thinking. Our approach balances specialised expertise with broader knowledge, preparing you either for advanced professional practice as an industry expert or innovative research pathways that can lead to postgraduate opportunities and the creation of new knowledge. Our courses empower you to develop distinctive ideas through creative and reflective approaches within your chosen discipline, equipping you to become the change-makers of tomorrow.

Our galleried, daylit architecture and design studios, situated on the upper levels of the Marylebone Campus, offer a vibrant, collaborative studio culture that mirrors professional practice. Our Westminster Fabrication Laboratory (FabLab) combines digital and analogue techniques, enabling innovation with materials, construction and virtual reality.

Our strong links with leading professionals and future employers provide students with valuable networking opportunities and excellent employment prospects. Recent graduates have gone on to successful careers within interior design, architectural practice, planning (public and private sector) and the construction industries.

Professional bodies accrediting or recognising our courses include:



**Campus for all courses:**  
Marylebone

**Architecture MA**  
Duration: 1 year FT / 2 years PT  
Start: September

**Architecture and Sustainable Heritage MA**  
Duration: 1 year FT / 2 years PT  
Start: September

**Architecture Postgraduate Diploma Professional Practice (RIBA pt III)**  
Duration: 1 year PT  
Start: September  
*The course is prescribed by the Architects Registration Board (ARB) and validated by the Royal Institute of British Architects (RIBA), providing exemption from the RIBA Part 3 examination.*

**Interior Architecture MA**  
Duration: 1 year FT / 2 years PT  
Start: September

**International Planning and Sustainable Development MA (Spatial Planning and Urban Resilience pathways)**  
Duration: 1 year FT / 2 years PT  
Start: September  
*Both course pathways have full RTPI accreditation as a Combined Planning Programme.*

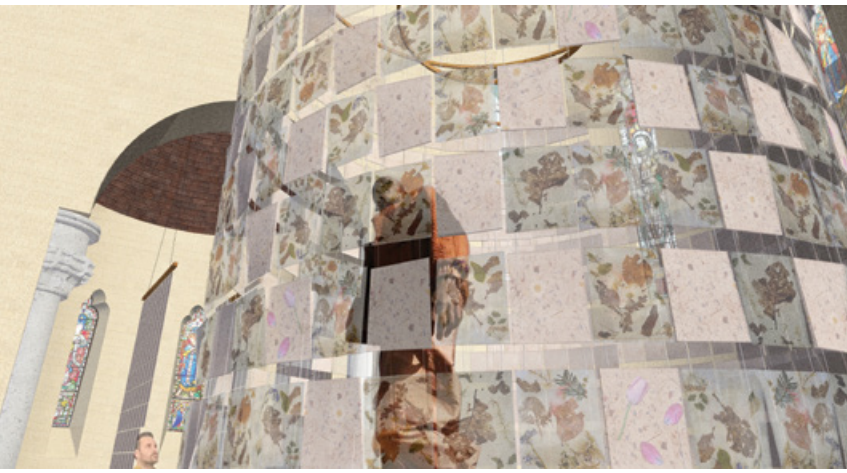
**Master of Architecture (March) (RIBA pt II)**  
Duration: 2 years FT  
Start: September  
*The course is prescribed by the Architects Registration Board (ARB) and validated by the Royal Institute of British Architects (RIBA), providing exemption from the RIBA Part II examination.*

**Urban Design MA**  
Duration: 1 year FT / 2 years PT  
Start: September  
*This course is accredited by the RTPI as a Specialist Course.*

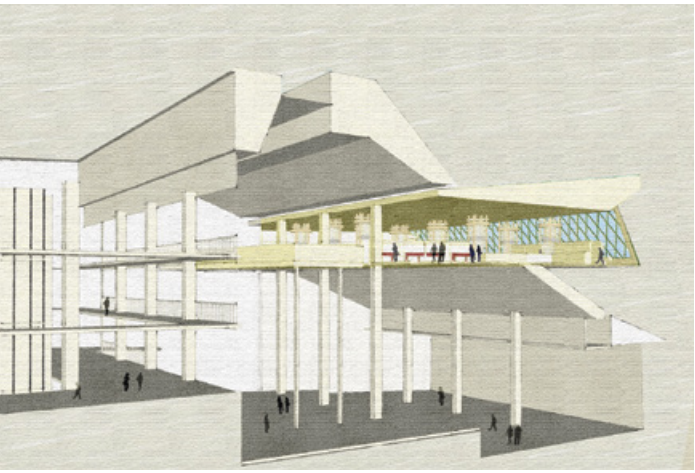
**Urban Design Postgraduate Diploma**  
Duration: 1 year FT / 2 years PT  
Start: September

**Urban Design Postgraduate Certificate**  
Duration: 1 year PT  
Start: September

**Urban and Regional Planning MA**  
Duration: 1 year FT / 2 years PT  
Start: September  
*This course is accredited by the RTPI as a Combined Degree Programme. Students may join as student members and upon graduation become licentiates.*



**“The studios were a dynamic space for experimenting, designing and collaborating with others passionate about urban planning and design.”**  
**MARYAM KHURRAM**  
International Planning and Sustainable Development MA



Student work clockwise from top-left: Bethany Nias, Polaris Galvez, Aswin Ferdinand, Adiba Choudhury, Hajir Mashahdah





# ART, DESIGN AND VISUAL CULTURE

Our postgraduate art and design portfolio offers a unique combination of professional practice, creative development, skills enhancement and contextual, specialist and interdisciplinary knowledge.

Our courses have always reflected and influenced the state of the art – right back to 1839. The world's first photography degree was delivered at our predecessor, the Regent Street Polytechnic.

We work with leading professionals and organisations to cultivate new talent and foster original, innovative thinking. You will be exposed to a rich mix of visiting speakers from across the creative sector and be able to draw upon the skills and expertise of lecturers, other students and links to London's vibrant creative community.

Our graduates go on to a wide range of careers as artists, photographers, curators, designers, academics, writers, digital advertising executives, creative technologists, digital content producers and developers, game designers, new media producers and marketers, app developers and entrepreneurs.

**“With access to feedback and guidance from top-level photography professionals, industry-standard equipment and a strong creative network, I found Westminster to be the ideal environment for deepening my photographic practice and accelerating my artistic career.”**

**YANGZI QIU**  
Expanded Photography MA

## **Art and Emerging Technologies MA**

**Duration:** 1 year FT / 2 years PT  
**Start:** September  
**Campus:** Harrow

## **Art and Visual Culture MA**

**Duration:** 1 year FT / 2 years PT  
**Start:** September and January  
**Campus:** Regent

## **Cultural and Critical Studies MA**

**Duration:** 1 year FT / 2 years PT  
**Start:** September and January  
**Campus:** Regent

## **Expanded Photography MA**

**Duration:** 1 year FT / 2 years PT  
**Start:** September  
**Campus:** Harrow

## **Global Contemporary Art MA**

**Duration:** 1 year FT / 2 years PT  
**Start:** September  
**Campus:** Harrow

## **Interactive Media Practice MA**

**Duration:** 1 year FT / 2 years PT  
**Start:** September  
**Campus:** Harrow

## **Museums, Galleries and Contemporary Culture MA**

**Duration:** 1 year FT / 2 years PT  
**Start:** September and January  
**Campus:** Regent

*Modules on this course have been designed in partnership with museums and galleries including The Photographers' Gallery and Museum of London.*

## **Museums, Galleries and Contemporary Culture with Professional Experience MA**

**Duration:** 2 years FT  
**Start:** September  
**Campus:** Regent

*Modules on this course have been designed in partnership with museums and galleries including The Photographers' Gallery and Museum of London.*







# BIOLOGICAL AND BIOMEDICAL SCIENCES

At Westminster you will hone your practical and professional skills interacting with our academics who enjoy an international reputation for professional and research activities. With courses informed by our research and in collaboration with national and international institutions, you have the chance to experience the excitement of these fields first-hand, including opportunities to visit world leading flagship laboratories with state-of-the-art facilities.

We are proud of our contribution in biomedical sciences and have an active research culture. Our researchers are finding ways to help tackle cancer, liver disease, obesity, diabetes, and neurodegenerative and inflammatory diseases. Our biotechnology research is internationally admired, aiming to exploit biological resources for the development of bio-products and their use for environmental, medical and chemical/biochemical applications.

We teach and research topics at the forefront of industry developments, from the growing relationship between artificial intelligence and healthcare; to exploring environmental sustainability through the lens of data science; to key issues at the forefront of the pharmaceutical science industry.

Graduates have gone on to a variety of careers including research or industry. Some graduates undertake PhD programmes or enter careers in research and development or commercial areas such as technical roles or sales in life science and healthcare companies. Those already working in research or healthcare laboratories have gained additional or translational skills, enhancing their current roles.

**Campus for all courses:**  
Cavendish

**Applied Biotechnology MSc**  
Duration: 1 year FT  
Start: September

**Artificial Intelligence and Digital Health MSc**  
Duration: 1 year FT / 2 years PT  
Start: September

**Biomedical Sciences MSc**  
Duration: 1 year FT / 2 years PT  
Start: September  
*The course is accredited by the Institute of Biomedical Science (IBMS).*

**Environmental Sustainability and Data Science MSc**  
Duration: 1 year FT / 2 years PT  
Start: September

**Pharmaceutical Science MSc**  
Duration: 1 year FT / 2 years PT  
Start: September

Professional bodies accrediting or recognising our courses include:



# BUSINESS AND MANAGEMENT

Our graduates develop the relevant skills and mindset to respond proactively, creatively and responsibly to challenges in today’s rapidly changing international business environment. Our innovative management programmes cover operational and strategic aspects, combining rigorous academic study with practical, evidence-based skills.

Each programme has been carefully designed to produce creative, skilled and enterprising professionals with the expertise and confidence to build rewarding careers, while having a real impact where they work. You might want to develop your entrepreneurial skills, explore the latest project management techniques, analyse the environmental issues facing companies or manage organisational change. Whatever your business interest, we can support you.

Our team combines strong specialist business experience with the academic qualifications to teach all aspects of applied management, leadership and its associated specialist disciplines.

Our business courses will prepare you to become business leaders and entrepreneurs, or seek employment in SMEs and blue-chip companies in the public, private or third sector.

For Marketing courses see page 52.

**“My advice to someone considering studying at the University of Westminster – immerse yourself in the culture, network with professionals and explore industries that interest you.”**

**MARIA FERNANDA GREGORIO MORAIS**  
International Business and Management MSc

**Campus for all courses:**  
Marylebone

**Business and Organisational Psychology MSc**  
Duration: 1 year FT / 2 years PT  
Start: September and January  
*This course is accredited by the Association for Business Psychology (ABP).*

**Entrepreneurship, Innovation and Enterprise Development MSc**  
Duration: 1 year FT  
Start: September and January

**Human Resource Management MA**  
Duration: 1 year FT / 2 years PT  
Start: September and January  
*This course is accredited by the Chartered Institute of Personnel and Development (CIPD).*

**International Business and Management MSc**  
Duration: 1 year FT  
Start: September and January  
*This course is accredited by Chartered Management Institute (CMI).*

**International Development Management MSc**  
Duration: 1 year FT  
Start: September and January

**International Human Resource Management MA**  
Duration: 1 year FT  
Start: September and January  
*This course is accredited by the Chartered Institute of Personnel and Development (CIPD).*

**Management MA**  
Duration: 1 year FT  
Start: September and January

**Master of Business Administration (MBA)**  
Duration: 1 year FT  
Start: September and January

**Project Management MSc**  
Duration: 1 year FT  
Start: September and January  
*This course is accredited by the Association of Project Management (APM) and the PMI Global Accreditation Center for Project Management Education Programs (GAC).*

**Sustainability Management and Innovation MSc**  
Duration: 1 year FT  
Start: September and January  
*This course is recognised by the Carbon Trust.*

Professional bodies accrediting or recognising our courses include:







# COMPUTER SCIENCE AND ENGINEERING

Our specialist postgraduate courses are designed to prepare you for the fast-moving, technology-driven industries.

The Applied Artificial Intelligence MSc is ideal for computing graduates and professionals looking to upskill. The course emphasises real-world AI applications, offering hands-on learning with industry-standard tools, programming languages, key AI libraries and development environments. Optional modules in Applied Computer Vision or Big Data and Cloud Computing allow you to tailor your learning to specific interests. The final project provides the opportunity to solve real-world challenges, enhance your research skills and advance your career in AI-driven sectors.

As our reliance on computers grows, so does our need for cyber security. Our Cyber Security and Forensics MSc, shaped by our strong industry links and active in-house research, offers specialist pathways in cyber security or digital forensics. You'll gain deep insights into modern system threats, data recovery techniques and digital asset protection. Graduates have pursued careers as senior information security officers, cybersecurity analysts and digital forensics investigators.

Our Software Engineering (Conversion) MSc is designed for non-computing graduates who wish to transition into software engineering. It provides core, practical skills in software development, programming, mobile computing and system design, preparing you for a wide range of roles in the IT industry. You'll gain hands-on experience, while also developing a strong understanding of the theoretical foundations behind the technology.

For Data Science and Informatics courses see page 44.

**“The academic team bring a wealth of industry expertise and mentorship, helping us navigate complex concepts and real-world applications.”**

**ABDUL KARIM**  
Cyber Security and Forensics MSc

**Campus for all courses:**  
Cavendish

**Applied Artificial Intelligence MSc**  
**Duration:** 1 year FT / 2 years PT  
**Start:** September

**Cyber Security and Forensics MSc**  
**Duration:** 1 year FT / 2 years PT  
**Start:** September and January  
*This course is accredited by the British Computer Society (BCS), The Chartered Institute for IT for the purposes of partially meeting the academic requirement for registration as a Chartered IT Professional and partially meeting the academic requirement for a Chartered Engineer.*

*This programme is also fully certified by the National Cyber Security Centre (NCSC), which is a sign of national excellence. Students will receive a certificate upon graduation. The NCSC is part of the UK Government's national communications intelligence agency GCHQ.*

Professional bodies accrediting or recognising our courses include:



**Software Engineering (Conversion) MSc**  
**Duration:** 1 year FT / 2 years PT  
**Start:** September



# CONSTRUCTION, SURVEYING AND REAL ESTATE

Our professionally focused real estate and construction portfolio provides you with the skills to succeed in a workplace centred on the technological and managerial processes involved in the development, post-construction, appraisal and management of buildings.

We have strong links with professional bodies and the industry, ensuring our courses remain aligned with current practice. Highly regarded by students and employers in the UK and internationally, our courses are informed by the latest developments in practice and research.

Our graduates have excellent career prospects, with alumni progressing to senior roles in real estate, consultancy and financial services. Recent graduates have secured roles at CBRE, Mace, Barratt Developments, Savills, Carter Jonas and Grainger.

**Campus for all courses:**  
Marylebone

**Construction Project Management MSc**  
**Duration:** 1 year FT  
**Start:** September and January  
*This course is fully accredited by the Chartered Institute of Building (CIOB) and seeking reaccreditation by the Royal Institution of Chartered Surveyors (RICS).*

**Real Estate Development MSc**  
**Duration:** 1 year FT  
**Start:** September and January  
*This course is accredited by the Royal Institution of Chartered Surveyors (RICS).*

**“The University’s inclusive and supportive environment made me feel like I belonged from the very beginning. I have also benefited from real opportunities, such as networking events, careers fairs, and international collaborations.”**

**STELA BOTNARI**  
Real Estate Development MSc

Professional bodies accrediting or recognising our courses include:







# CRIMINOLOGY

Our Criminology teaching team is at the cutting edge of developments in critical and international criminology, and provides an inclusive learning environment for students from all backgrounds. You will benefit from our strong links with London-based non-governmental organisations and prisons, providing a unique insight into the field.

Our Global Criminology course is designed to develop your knowledge and critical understanding of criminology as an interdisciplinary subject that incorporates legal, political, psychological and social scientific approaches to the study of crime, deviance, and criminal and social justice, both nationally and globally. Students are also offered the opportunity to study with prisoners in London and to visit prisons in South America.

It will prepare you for a broad range of national and international career opportunities in the fields of criminal justice, human rights, victim and offender support, research, policing, and the probation and prison services. The academic knowledge and research skills gained by completing the course also put you in a strong position to undertake further research, such as a PhD.

**“This course provides a unique opportunity to study and research in collaboration with people in prison.”**

**ELLA WALSH**  
Global Criminology MA

**Global Criminology MA**  
Duration: 1 year FT / 2 years PT  
Start: September  
Campus: Regent



# DATA SCIENCE AND INFORMATICS

Our postgraduate courses prepare you to become a professional data scientist, architect or analyst who not only understands complex business challenges but can also design, develop and manage the data-driven solutions that today's organisations demand. By exploring critical issues such as data security, privacy and ethics, you'll gain a deeper understanding of how information systems impact society.

The Data Science and Analytics course addresses the increasing demand for expertise in extracting insights from vast amounts of routinely collected data. You'll gain practical skills in machine learning, advanced analytics and statistical methods, equipping you to uncover meaningful patterns and drive data-informed decision-making.

The Big Data Technologies MSc course transforms students into data professionals with essential skills for today's data-driven world. This intensive, practical programme focuses on the infrastructure powering modern data systems, teaching you to design, develop and manage large-scale data solutions. You'll master cutting-edge technologies for handling massive datasets, including data warehousing, database management, machine learning and business intelligence tools.

All our Master's teaching is informed by our strong industry connections and supported by active in-house research across areas such as data science and analytics, health and social care modelling, computational intelligence, parallel computing, distributed and intelligent systems, and semantic computing.

**Campus for all courses:**  
Cavendish

**Big Data Technologies MSc**  
Duration: 1 year FT / 2 years PT  
Start: September  
This course is accredited by the British Computer Society (BCS), The Chartered Institute for IT for the purposes of partially meeting the academic requirement for registration as a Chartered IT Professional and partially meeting the academic requirement for a Chartered Engineer.

**Data Science and Analytics MSc**  
Duration: 1 year FT / 2 years PT  
Start: September and January  
This course is accredited by the British Computer Society (BCS), The Chartered Institute for IT for the purposes of partially meeting the academic requirement for registration as a Chartered IT Professional and partially meeting the academic requirement for a Chartered Engineer.

**“I found the modules varied, engaging, and current, with lecturers who were always supportive and approachable.”**

**LILA INAM**  
Data Science and Analytics MSc

Professional bodies accrediting or recognising our courses include:







# ECONOMICS

Studying economics enables you to understand the key global issues of the day. It provides the tools and techniques for individuals, businesses and governments to analyse and interpret the issues and problems they face.

With a strong research profile, we are particularly respected in the areas of applied research in labour and education economics. Other areas of research strength include macroeconomics, financial econometrics, international economics and development economics, and urban and regional economics.

We pride ourselves on inclusive and innovative approaches to student learning and research-informed teaching. You will gain an in-depth knowledge of the latest theories, practices and key concepts in economics, and will develop the practical skills needed by a working economist.

There are growing opportunities for graduates with a practically focused knowledge of economics to develop careers as professional economists, managers, business analysts or consultants in private, public and third sector organisations.

The skills and knowledge gained with us will open up a range of opportunities to build a career in government or consultancies, as economic analysts, regulatory economists and market analysts. Previous graduates have found employment at organisations such as the International Monetary Fund, Rio de Janeiro Mayor’s Office, Shelter (UK housing charity) and the UK Government Economic Service, including Ofcom and Ofgem.

For Global Development MA see page 56.

**Campus for all courses:**  
Marylebone

**Economic Policy and Analysis MSc**  
Duration: 1 year FT  
Start: September and January

**International Development Management MSc**  
Duration: 1 year FT  
Start: September and January

“I would absolutely recommend the University. Do it not only for your professional development but also your personal life. You’ll have the opportunity to make friends for life, all whilst improving your employability in the job market.”

**MAGDA DZIUBA**  
Economic Policy and Analysis MSc



# ENGLISH AND CREATIVE WRITING

As a dynamic institution, we offer a thought-provoking and productive environment in which to work and study. Our lively postgraduate and research culture embraces a range of different subject areas, critical approaches and professional practices.

Our diversity is our strength. There is always a stimulating interchange of ideas within and across the different fields, and a wonderful range of expertise available among our staff, comprising well-known academics, writers, curators and artists.

Based in the heart of London, we have strong collaborative relationships with cultural institutions in the UK, such as Tate and the Museum of London, as well as abroad with the Smithsonian Institution, Washington, D.C.

All our MA and PhD programmes are intellectually ambitious – we want to inspire you to develop, whether you are starting, building or changing your career. Work placements are available on many of our courses, giving you professional experience, enhancing your career prospects and helping to build your connections. Graduates are well equipped for a variety of roles, including as content writers, editors, journalists, publishing professionals or teachers.

“The lecturers are excellent with a wealth of subject knowledge that inspires confidence.”

**MONIKA WOKO**  
English Literature: Modern and Contemporary Fictions MA

**Campus for all courses:**  
Regent unless otherwise stated

**Creative Writing: Writing the City MA**  
Duration: 1 year FT / 2 years PT  
Start: September and January

**Cultural and Critical Studies MA**  
Duration: 1 year FT / 2 years PT  
Start: September and January

**English Language and Linguistics MA**  
Duration: 1 year FT / 2 years PT  
Start: September and January

**English Language and Literature MA**  
Duration: 1 year FT / 2 years PT  
Start: September and January

**English Literature: Modern and Contemporary Fictions MA**  
Duration: 1 year FT / 2 years PT  
Start: September and January

**Professional Writing MA**  
Duration: 1 year FT / 2 years PT  
Start: September and January

**Professional Writing with Extended Work Placement MA**  
Duration: 2 years FT  
Start: September

**Teaching English to Speakers of Other Languages (TESOL) MA**  
Duration: 1 year FT / 2 years PT  
Start: September and January

**Teaching English to Speakers of Other Languages (TESOL) MA**  
Duration: 1 year FT  
Start: September and January

**ONLINE**





# FASHION

Westminster has a global reputation for producing highly creative fashion professionals. To maintain this position, we develop innovative courses that educate and train the next generation of creative industry leaders, entrepreneurs and designers, while deepening their critical understanding of the field.

Through our specialist courses, you'll gain the creative, technical and strategic skills needed to succeed in today's fast-changing landscape.

Sustainability is embedded throughout our curriculum, preparing you to influence industry change. Shared optional modules allow you to tailor your learning to your interests. These modules explore digital innovation, contemporary challenges and professional contexts, while fostering collaborative, cross-disciplinary thinking.

A key resource is the Westminster Menswear Archive, a world-renowned collection of over 3,000 garments and accessories from designers such as Alexander McQueen, Craig Green and Maison Margiela. It offers students hands-on research and design development opportunities, providing insights into material culture, construction and design from historical, technical and conceptual perspectives.

We are proud to celebrate our graduates on internationally recognised industry platforms. Previous opportunities have included London Fashion Week and Men's Fashion Week in Milan – Milano Moda.

Our alumni include acclaimed designers and professionals such as Steven Stokey-Daley (S.S.Daley) and Priya Ahluwalia, both recipients of the LVMH Prize; Roberta Einer; Liam Hodges; Ashley Williams; Stuart Vevors, Creative Director at Coach; and Christopher Bailey, former President and Chief Creative Officer at Burberry.

**Campus for all courses:**  
Harrow

**Fashion Accessories Design MA**  
Duration: 1 year FT / 2 years PT  
Start: September

**Fashion Business Management MA**  
Duration: 1 year FT  
Start: September

**Fashion Manufacturing MA**  
Duration: 1 year FT / 2 years PT  
Start: September

*This course is developed with our industry partners the UK Fashion and Textile Association (UKFT) and allows students to access guest speakers and networking opportunities.*



**“After graduating, I’m now working at Dunhill and have seen my academic pursuits transition into practical industry experience.”**

**GWEN GYUWON BAEK**  
Menswear with Professional Experience MFA

**Fashion Sustainability MA**  
Duration: 1 year FT  
Start: September

**Menswear MA**  
Duration: 1 year FT  
Start: September

**Menswear with Professional Experience MFA**  
Duration: 2 years FT  
Start: September



Student work clockwise from top-right: Gyouso Liu, Gabriel Silva Barros, Ricky Cai, Rintaro Tezuka, Stella Lam.







# FILM AND TELEVISION

We offer two distinct and highly sought-after postgraduate courses in Film and Television, which provide prospective students with different and exciting routes to further their careers in these competitive industries.

Our Business of Film MA aims to equip students with essential knowledge and skills in the film industry. The programme will prepare you for the challenges faced by the film sector today, build your industry contacts and extend your entrepreneurial skills and commercial acumen. The course embraces creative problem solving in tandem with business and negotiation skills.

Our Film, Television and Moving Image MA provides a creatively and intellectually inspiring environment in which to develop your authorial voice. Emphasising the transformative potential of the screen sector while generating industry knowledge and skills, it offers creative practice options in screenwriting, nonfiction filmmaking and film programming. The flexible course design enables you to graduate with either a specialised or diverse creative portfolio alongside strong academic and industry research and writing skills.

Both courses are available full-time or part-time, for students looking for roles in film financing, marketing or production. Sustainability is a core focus, with BAFTA Albert certification integrated into the curriculum, preparing you to lead environmentally responsible production practices.

## Business of Film MA

Duration: 1 year FT / 2 years PT

Start: September

Campus: Regent

Delivered with our industry partners the BFI (British Film Institute) and Regent Street Cinema, this course allows students to access guest speakers, networking and select industry placement opportunities.



Image credit: Darren Brade



**Our Business of Film MA is delivered in partnership with the BFI (British Film Institute) and Regent Street Cinema.**

Both courses are full members of the International Association of Film and Television Schools (CILECT):



**“My course takes a practical, real-world approach and encourages industry networking. Our experienced lecturers make learning relevant and engaging.”**

**ERRIANNE ROJO**  
Business of Film MA

## Film, Television and Moving Image MA

Duration: 1 year FT / 2 years PT

Start: September

Campus: Harrow

Our partnership with The TV Foundation provides career development opportunities for students.



# LANGUAGES

In an increasingly global world, our rich portfolio of postgraduate courses seeks to meet the demand for interpersonal and intercultural communication across different languages. Through applied and professional languages, our focus is on languages being both explored and employed.

Our postgraduate courses are delivered by highly skilled professionals. Their practice-led approach is complemented by theory-informed lectures and seminars, taught by academics who are active researchers in the fields of translation studies, linguistics, intercultural communication and language pedagogy.

Our Specialised Translation and Translation and Interpreting courses focus on professional skills, leading directly into careers in the translation and interpreting industry.

The Teaching English to Speakers of Other Languages (TESOL) course provides advanced training in TESOL, with the option to additionally enrol at a CELTA course near the University. The International Communication – Liaison and Advocacy course focuses on liaison, negotiation and intercultural communication.

The University of Westminster is a Higher Education Language partner of the Chartered Institute of Linguists, member of the Institute of Translation and Interpreting, the Conférence Internationale permanente d'Instituts Universitaires de Traducteurs et Interprètes, the Association of Programmes in Translation and Interpreting Studies, UK and Ireland, Elia Exchange, and the UN MoU Network.

**“I dreamt of becoming a freelance translator or interpreter but through this course, I discovered that I was well equipped for other roles too, like project management.”**

**LUCIO BAGNULO**  
Translation and Interpreting MA, now Head of Translation & Language Strategy at Amnesty International, Madrid

## Campus for all courses:

Regent unless otherwise stated

## International Communication – Liaison and Advocacy MA

Duration: 1 year FT / 2 years PT

Start: September and January

## Specialised Translation MA

Duration: 1 year FT / 2 years PT

Start: September

## Specialised Translation with Professional Experience MA

Duration: 2 years FT

Start: September

## Teaching English to Speakers of Other Languages (TESOL) MA

Duration: 1 year FT / 2 years PT

Start: September and January

## Teaching English to Speakers of Other Languages (TESOL) MA

Duration: 1 year FT

Start: September and January

**ONLINE**

## Translation and Interpreting MA

Duration: 1 year FT

Start: September

## Translation and Interpreting with Professional Experience MA

Duration: 2 years FT

Start: September

Professional bodies accrediting or recognising our courses include:







# LAW

Our Law School offers a broad and innovative range of postgraduate courses. Embedded in practice, our courses benefit from substantial input from professional experts and reflect the cutting-edge research led by the academic staff. You will develop original knowledge and skills which are relevant to a changing world, covering diverse areas of law, ranging from international commercial and corporate law to technology, international law and entertainment law.

Our academic staff are not only active researchers, passionate about their subject; they are also recognised experts called upon to advise government bodies and courts on their specialist areas. As part of our vibrant postgraduate community you will be encouraged to become involved in our research activities.

Class sizes are kept relatively small to ensure that you have a first-class learning experience. The wide range of option modules offered on our courses allow you to tailor the course to reflect your interests and aspirations. You will also have the opportunity to participate in the student-led (pro bono) Legal Advice Clinic and a variety of career and subject-specialist events throughout the year.

Our graduates have gone on to have successful careers including as solicitors, barristers, family law mediators, and banking and finance lawyers for a variety of bodies including international organisations, government departments and NGOs.

**Campus for all courses:** Regent  
(Little Titchfield Street Site)

**Advanced Legal Research LLM**  
Duration: 1 year FT / 2 years PT  
Start: September

**Corporate Finance Law LLM**  
Duration: 1 year FT / 2 years PT  
Start: September and January

**Entertainment Law LLM**  
Duration: 1 year FT / 2 years PT  
Start: September and January

**International and Commercial Dispute Resolution Law LLM**  
Duration: 1 year FT / 2 years PT  
Start: September and January

**“Westminster focuses on practical skills, recognising that education extends beyond textbooks.”**

**NAPOLEON GONZALES III**  
International Law LLM

**International Commercial and Corporate Law LLM**  
Duration: 1 year FT / 2 years PT  
Start: September and January

**International Law LLM**  
Duration: 1 year FT / 2 years PT  
Start: September and January

**Law and Technology LLM**  
Duration: 1 year FT / 2 years PT  
Start: September

**Legal Practice LLM / PGDip**  
Duration: 1 year FT / 2 years PT  
Start: September

*The LLM incorporates the Legal Practice Course and is accredited by the Solicitors Regulation Authority (SRA). Students may also study for the Postgraduate Diploma which includes only the necessary LPC modules. The LPC remains a valid qualification route after SQE.*



# MARKETING

Businesses need people who can design and manage innovative marketing strategies. Our exciting and contemporary courses will prepare you for success in the marketing world, with the option to focus on digital marketing or data analytics using our specialist facilities.

You might be looking to change career or want to specialise in the fast-changing areas of marketing and marketing communications. Whatever your interest, our programmes combine theory with practice in developing the attributes and specialist skills you need to confidently develop your career and respond to the changing business environment. Optional work-based learning modules are available on some programmes.

We have strong links with the Chartered Institute of Marketing (CIM), Digital Marketing Institute (DMI), Institute of Data and Marketing (IDM) and the Institute of Practitioners in Advertising (IPA). This is reflected in the high level of guest speakers from industry who regularly contribute to our courses. Our dedicated, multicultural staff bring academic and real-world practitioner expertise to the learning experience and take a proactive approach to inclusivity, diversity and equality.

Our courses will prepare you for a wide variety of roles in business, such as account executive, brand manager, digital marketing executive, founder and CEO, and sales and marketing manager. Recent graduates have found employment in organisations including Adidas, Diageo, IMG Media, M&C Saatchi, McLaren Automotive, MediaCom and Unilever.

For full and most up-to-date information, see our website:  
[westminster.ac.uk/marketing](https://www.westminster.ac.uk/marketing)

**“I liked that Westminster focused not only on academic knowledge but also experiential learning and practical skills which will be useful for employability when I get back to work.”**

**ANDREA LIN**  
Digital Marketing Management MSc

**Campus for all courses:** Marylebone

**Data and Marketing Analytics MSc**  
Duration: 1 year FT  
Start: September and January

**Digital Marketing Management MSc**  
Duration: 1 year FT  
Start: September and January  
*This course is accredited by the Digital Marketing Institute (DMI), the Institute of Data and Marketing (IDM) and the Chartered Institute of Marketing (CIM) with a Graduate Gateway programme status.*

**Marketing Communications MA / MSc**

Duration: 1 year FT  
Start: September and January  
*This course is accredited by the Digital Marketing Institute (DMI) and the Institute of Data and Marketing (IDM), and prepares students to take the exam for the IPA Global Foundation Certificate. In addition, students gain membership of the Chartered Institute of Public Relations (CIPR). This course is accredited by the Chartered Institute of Marketing (CIM) with a Graduate Gateway programme status.*

**Marketing Management MA / MSc**

Duration: 1 year FT  
Start: September and January  
*This course is accredited by the Digital Marketing Institute (DMI) and the Chartered Institute of Marketing (CIM) with Graduate Gateway programme status.*

Professional bodies accrediting or recognising our courses include:







# MEDIA AND COMMUNICATION

Our courses offer exciting new avenues of practice and interdisciplinary thought. With teaching by groundbreaking researchers and industry professionals, we will foster your capacity to develop creative media practices while deepening your understanding of the underpinning theory.

We will help you explore media and communication in the context of the individual, organisations and society. Taking an interdisciplinary approach, our courses tackle diverse issues ranging from communication policy, global media, development, social media and social change, right through to big data and applications of AI.

Many teaching staff are internationally renowned researchers and members of the University's Communication and Media Research Institute (CAMRI). CAMRI is one of the world's foremost research centres for media and communication studies.

Our graduates go on to succeed in a wide range of careers as journalists, media and digital media practitioners, campaign communicators, editors, academics and entrepreneurs.

**"I chose Westminster for its experienced journalist tutors and practical learning. It was my dream to work for the BBC and now I'm living it."**

**SAMEED KAKROO**  
Video Journalist, BBC  
Multimedia Journalism MA (Broadcast)

Professional bodies accrediting or recognising our courses include:



**AI, Data and Communication MA**  
**Duration:** 1 year FT / 2 years PT  
**Start:** September  
**Campus:** Cavendish, Harrow and Regent

**Communication MA**  
**Duration:** 1 year FT / 2 years PT  
**Start:** September  
**Campus:** Harrow

**Digital Media: Storytelling and Production MA**  
**Duration:** 1 year FT  
**Start:** September  
**Campus:** Harrow

**Global Media MA**  
**Duration:** 1 year FT / 2 years PT  
**Start:** September  
**Campus:** Harrow

**Immersive Media Design MA**  
**Duration:** 1 year FT / 2 years PT  
**Start:** September  
**Campus:** Harrow

**Interactive Media Practice MA**  
**Duration:** 1 year FT / 2 years PT  
**Start:** September  
**Campus:** Harrow and Cavendish

**Media and Development MA**  
**Duration:** 1 year FT / 2 years PT  
**Start:** September  
**Campus:** Harrow, Regent and Little Titchfield Street

**Media, Campaigning and Social Change MA**  
**Duration:** 1 year FT / 2 years PT  
**Start:** September  
**Campus:** Cavendish, Harrow, Regent and Little Titchfield Street

**Media, Campaigning and Social Change Postgraduate Diploma**  
**Duration:** 1 year FT / 2 years PT  
**Start:** September  
**Campus:** Harrow, Cavendish, Regent and Little Titchfield Street

**Media, Campaigning and Social Change Postgraduate Certificate**  
**Duration:** 2 years PT  
**Start:** September  
**Campus:** Harrow, Cavendish, Regent and Little Titchfield Street

**Media Management MA**  
**Duration:** 1 year FT / 2 years PT  
**Start:** September  
**Campus:** Harrow, Cavendish and Regent

**Multimedia Journalism MA (Broadcast / Print and Online)**  
**Duration:** 1 year FT / 2 years PT  
**Start:** September  
**Campus:** Harrow  
*This course is accredited by the Broadcast Journalism Training Council.*

**Multimedia Journalism PG Dip (Broadcast/Print and Online)**  
**Duration:** 1 year FT / 2 year PT  
**Campus:** Harrow and Regent

**Public Relations MA/MSc**  
**Duration:** 1 year FT / 2 years PT  
**Start:** September  
**Campus:** Cavendish, Harrow and Regent  
*This course is recognised by the Chartered Institute of Public Relations (CIPR). Westminster's Partner Membership of the Public Relations and Communications Association (PRCA) provides students with access to professional development opportunities.*

**Social Media and Digital Communication MA**  
**Duration:** 1 year FT / 2 years PT  
**Start:** September  
**Campus:** Harrow, Regent and Little Titchfield Street

For full and most up-to-date information, see our website: [westminster.ac.uk/media-and-communication](https://westminster.ac.uk/media-and-communication)



# MUSIC

Our music courses are established and internationally recognised in their respective fields. We continue to develop generations of creative, responsive and critically agile music, audio and media professionals through our progressive approach to delivering these specialist subjects.

We are proud of the success of our graduates. The Audio Production course has produced BAFTA and Grammy Award winners, creative executives, educators, music and audio-visual producers, recording artists, and interactive and film sound designers. Graduates from this course work at the high end of the creative industry, at the BBC, Pinewood, Sony EA, Yamaha, Berklee, Disney, Paramount and Apple.

Our Music Business Management graduates can be found working around the world at the cutting edge of new music enterprises such as YouTube Music, Apple Music, Spotify, Believe, Kolbalt, BMG, AEG, PPL, PRS, Ticketmaster and Live Nation, as well as global entertainment powerhouses such as Universal Music Group, Sony Music Entertainment and Warner Music Group.

**Audio Production MA**  
**Duration:** 1 year FT / 2 years PT  
**Start:** September  
**Campus:** Harrow  
*This course is accredited by Joint Audio Media Education Support (JAMES).*

**Music Business Management MA**  
**Duration:** 1 year FT / 2 years PT  
**Start:** September  
**Campus:** Harrow

**"My course provided a comprehensive curriculum with hands-on projects and professional feedback, helping us explore diverse audio career paths."**

**WENXUAN LIU**  
Audio Production MA

Professional bodies accrediting or recognising our courses include:



For full and most up-to-date information, see our website: [westminster.ac.uk/music](https://westminster.ac.uk/music)





# NUTRITION AND PUBLIC HEALTH

Our courses address nutritional and public health issues across a wide range of people. This includes people with health issues relating to obesity and diet-related diseases, those in countries with issues relating to malnutrition and micronutrient deficiencies, and elite athletes requiring nutritional advice to optimise performance.

You will explore the evidence for the relationship between diet, physical activity and health and the role that interventions can have in promoting health and treating disease. Our career-focused courses give you the specialist knowledge and practical skills you need to succeed in your chosen profession.

Our courses are designed to equip you with the specialist expertise and real-world insight needed to tackle contemporary health challenges. Whether you're focusing on global nutrition, exercise performance or the role of digital technologies, you'll gain an understanding of how diet, data and behavioural science intersect to influence health outcomes. Courses such as Global Public Health Nutrition MSc and Sport and Exercise Nutrition MSc offer specialist training, while programmes like Global Public Health with Data Science MSc, the new Artificial Intelligence and Digital Health MSc, and our online Digital Health and Cyberpsychology MSc provide interdisciplinary tools to address evolving global issues and support evidence-based policy, research and intervention strategies.

Graduates in this field can expect to gain employment as public health policy experts, data analysts, nutrition advisers, dietitians, sports nutritionists, teachers or researchers.

**Campus for all courses:**  
Cavendish unless otherwise stated

**Artificial Intelligence and Digital Health MSc**  
Duration: 1 year FT / 2 years PT  
Start: September

**Digital Health and Cyberpsychology MSc**  
Duration: 1 year FT / 2 years PT  
Start: September and January  
**ONLINE**

**Global Public Health Nutrition MSc**  
Duration: 1 year FT / 2 years PT  
Start: September  
*The course is accredited by the Association for Nutrition as part fulfilment of the requirements for registration as an associate nutritionist.*

**Global Public Health with Data Science MSc**  
Duration: 1 year FT / 2 years PT  
Start: September

**Sport and Exercise Nutrition MSc**  
Duration: 1 year FT / 2 years PT  
Start: September  
*This course is accredited by the Association for Nutrition and the Sport and Exercise Nutrition register (SENr).*

**“The best aspect of being part of the University is the support from the lecturers. They go above and beyond.”**

**BEN OFOSUHENEN**  
Global Public Health Nutrition MSc

Professional bodies accrediting or recognising our courses include:



# POLITICS AND INTERNATIONAL RELATIONS

Recognised for our expertise in this field, we are proud of our diverse student body, inclusive culture and challenging, critical research. We are a vibrant academic community with a central London location and a commitment to enhancing your learning experience through both formal teaching and broader intellectual activities.

We have an international reputation for innovative research in politics and international relations, especially through our renowned Centre for the Study of Democracy, with particular strengths in political and international theory, critical security studies, climate and energy politics, just development, queer politics, and decolonial studies. Our staff are active researchers bringing their knowledge and expertise into their teaching on our postgraduate courses, enabling you to engage with contemporary debates and issues at the highest level.

In addition to research-led teaching, we regularly invite external speakers to take part in our well-established series of seminars, public lectures and conferences. We organise international trips and have well-established partnerships with global organisations. We support an enhanced student experience through our pioneering Democratic Education Network, a rich employability programme, as well as a range of student-led projects and societies.

Graduates work in a variety of roles, including as diplomats, journalists, policy analysts, civil servants, researchers and teachers.

**Campus for all courses:** Regent

**Diplomacy and Global Politics MA**  
Duration: 1 year FT / 2 years PT  
Start: September and January

**Global Development MA**  
Duration: 1 year FT / 2 years PT  
Start: September and January

**International Relations MA**  
Duration: 1 year FT / 2 years PT  
Start: September and January

**International Relations and Democratic Politics MA**  
Duration: 1 year FT / 2 years PT  
Start: September and January

**International Relations and Security MA**  
Duration: 1 year FT / 2 years PT  
Start: September and January

**Public Policy and Management MA**  
Duration: 1 year FT / 2 years PT  
Start: September and January

**“It is great to engage with diplomats and senior policy practitioners as part of my course.”**

**JOANNA ENU OBENG**  
International Relations MA





# PSYCHOLOGY

The University of Westminster has a strong reputation for postgraduate teaching in psychology. We offer exciting and distinctive courses in some of the most interesting areas of the subject. Our supportive, interactive learning environment equips you with theory and insights, as well as skills that can be applied in a professional setting.

Each course is developed and delivered by a team of enthusiastic, supportive psychologists who are all specialists in their fields. You will be taught by active researchers, passionate about sharing their enthusiasm for their subject. Our vibrant research culture is distinctive for its openness, collaboration and interdisciplinary approach.

Our new Forensic Psychology MSc course integrates key concepts of development, training, research methodologies, and applying psychological principles within the legal and criminal justice systems. Our new Digital Health and Cyberpsychology (Online) MSc explores the psychological impact of technology in healthcare, preparing students to design inclusive digital interventions that promote behaviour change and reduce health inequalities.

Our Health Psychology MSc graduates have secured stage 2 training places to become Chartered Health Psychologists, while our Psychology MSc graduates have secured places on professional training courses that require Graduate Basis for Chartered Membership of the British Psychological Society. Graduates from our psychology courses are well equipped for a variety of related roles, including counsellors, psychotherapists, health consultants, behavioural insights advisers, business and organisational psychologists, public health specialists and psychological wellbeing practitioners.

## Business and Organisational Psychology MSc

**Duration:** 1 year FT / 2 years PT  
**Start:** September and January  
**Campus:** Marylebone  
*This course is accredited by the Association for Business Psychology (ABP).*

## Counselling MSc (top-up)

**Duration:** 1 year PT  
**Start:** September  
**Campus:** Cavendish

## Counselling PGDip

**Duration:** 2 years PT  
**Start:** September  
**Campus:** Cavendish

## Digital Health and Cyberpsychology MSc

**Duration:** 1 year FT / 2 years PT  
**Start:** September and January  
**ONLINE**

## Forensic Psychology MSc

**Duration:** 1 year FT / 2 years PT  
**Start:** September  
**Campus:** Cavendish  
*This course is accredited by the British Psychological Society (BPS).*

## Health Psychology MSc

**Duration:** 1 year FT / 2 years PT  
**Start:** September  
**Campus:** Cavendish  
*This course is accredited by the British Psychological Society (BPS).*

## Psychology MSc

**Duration:** 1 year FT / 2 years PT  
**Start:** September  
**Campus:** Cavendish  
*This course is accredited by the British Psychological Society (BPS).*

**“I enjoy the group dynamic – everyone has their own perspective, which has made my learning so much richer.”**

**HESTER THOMPSON**  
Psychology MSc

*Professional bodies accrediting or recognising our courses include:*



# TOURISM AND EVENTS MANAGEMENT

We are committed to evolving and innovating our courses to adapt to these dynamic industries. This is evident in our Tourism Management MA and Event Design and Management MA programmes. The Tourism Management MA focuses on creating and enhancing the sense of place and visitor experience, taking into account communities, technologies and sustainability. The Event Design and Management MA emphasises the creative design, delivery and experience of modern, engaging events.

The tourism industry has in recent years been one of the largest employers globally, and the events industry has seen significant growth in employment options over the past decade. As the global economy evolves post-pandemic, events and tourism are playing an increasingly important role in drawing visitors back to our cities and also preparing for a carbon-neutral and more sustainable world. Our courses address the climate emergency and consider resilience, disaster planning and regeneration as core principles for the sector.

At Westminster, we remain a leader in the delivery of high-quality tourism and event management courses. Our experienced academics and industry practitioners will help you explore the challenges and opportunities recent events have brought to the sector. By studying in the heart of one of the world's leading tourist destinations, surrounded by world events, you will develop the skills you need to manage tourism or stage events in other host destinations.

**Campus for all courses:**  
Marylebone

## Event Design and Management MA

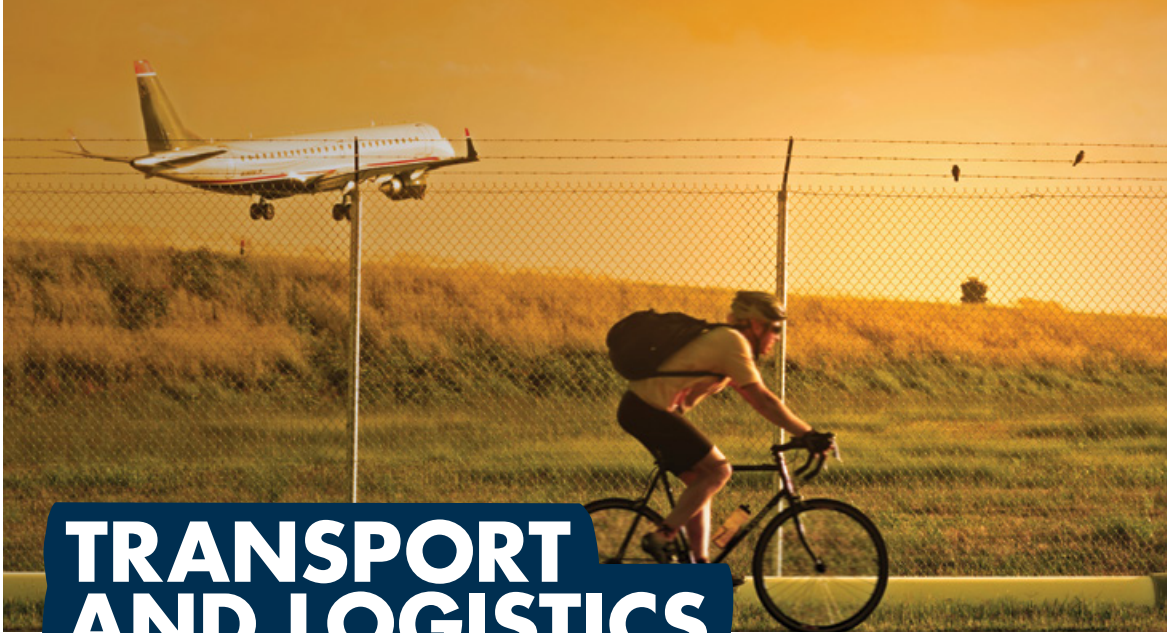
**Duration:** 1 year FT / 2 years PT  
**Start:** September  
*This course is affiliated with leading education and research associations. See website for details.*

**Tourism Management MA**  
**Duration:** 1 year FT / 2 years PT  
**Start:** September

**“Being a University of Westminster student offers the chance to interact with peers from around the world and participate in a wide range of events, including social, sporting and cultural activities that contribute to personal development.”**

**SOOJIN KIM**  
Tourism and Events Management MSc





# TRANSPORT AND LOGISTICS

Highly regarded by students and employers in the UK and internationally, our courses equip you for professional life, planning and managing the future of our transport and logistics systems.

Our academic staff enjoy an international reputation, and our degrees are known for their combination of pure, practice-led and applied approaches. You will develop your own specialist expertise working collaboratively with students from across the globe.

Our freight transport and logistics research group explores sustainability and supply chains efficiency, while our award-winning air traffic management research team is recognised as a leader in Europe. Our active and sustainable travel research has won prizes for its outstanding impact on public policy, and we have a new Active Travel Academy linked to the transport planning courses.

Graduates have gone on to enjoy a range of careers in sectors including airport authorities, logistics management, supply chain analysis, transport planning and operations management in a variety of public and private sector organisations and consultancies.

**“The best part of my course has been networking with aviation professionals, providing valuable insights and connections.”**

**NILESH GORSIA**  
Air Transport Planning and Management MSc

**Campus for all courses:**  
Marylebone

**Air Transport Planning and Management MSc**  
**Duration:** 1 year FT / 2 years via block release  
**Start:** September and January

**Logistics and Supply Chain Management MSc**  
**Duration:** 1 year FT / 2 years PT  
**Start:** September  
*This course is accredited by the Chartered Institute of Logistics and Transport (CILT). Students who successfully complete the course will be exempt from the academic requirements for the chartered membership grade (CMILT).*

**Logistics and Supply Chain Management PG Dip**  
**Duration:** 1 year FT  
**Start:** September

**Logistics and Supply Chain Management PG Cert**  
**Duration:** 1 year PT  
**Start:** September

**Transport Planning MSc**  
**Duration:** 1 year FT / 2 years PT  
**Start:** September

*This course is approved by the TPP Professional Standards Committee as meeting the educational requirements for the Transport Planning Professional qualification.*

*Students who successfully complete the course will be exempt from the examination requirements for membership of the Chartered Institute of Logistics and Transport (CILT).*

**Transport Planning PG Dip**  
**Duration:** 1 year FT / 2 years PT  
**Start:** September and January

**Transport Planning PG Cert**  
**Duration:** 1 year PT  
**Start:** September and January

Professional bodies accrediting or recognising our courses include:



Accredited Degree



# ESSENTIAL INFORMATION

## We're here to help

Our Course Enquiries Team provides information and advice on a range of topics, including:

- course information
- entry requirements for UK and international students
- the application process
- postgraduate open events
- tuition fees and payments

Chat to our Course Enquiries Team via live chat: [westminster.ac.uk/study](https://westminster.ac.uk/study)  
E: [course-enquiries@westminster.ac.uk](mailto:course-enquiries@westminster.ac.uk)  
T: +44 (0)20 7911 5000 ext 65511



# NOTES FOR APPLICANTS

## APPLYING TO WESTMINSTER

### Taught Master's courses

Specific entry requirements including English language requirements are listed on the course pages. Also see [westminster.ac.uk/study/english-language-requirements](https://www.westminster.ac.uk/study/english-language-requirements). If your degree or equivalent qualification is from outside the UK, visit [westminster.ac.uk/international](https://www.westminster.ac.uk/international) for information on our requirements.

Apply online by visiting [westminster.ac.uk/postgraduate-courses](https://www.westminster.ac.uk/postgraduate-courses). Select your desired course and click Apply to submit your application directly.

### Research degrees

MPhil/PhD applications have different procedures. Visit [westminster.ac.uk/research-degrees](https://www.westminster.ac.uk/research-degrees) for details.

### Application deadlines

Courses start in September and January. See the website for the application deadlines [westminster.ac.uk/study/postgraduate/how-to-apply](https://www.westminster.ac.uk/study/postgraduate/how-to-apply)

Apply early, especially if you need a visa, are submitting a portfolio or require an interview. Early application is also crucial for scholarship considerations.

### Gaining credit for what you have learnt

Recognition of Prior Experiential Learning (RPEL) recognises knowledge or skills acquired through life or work experience, which have not been formally recognised by an academic or professional certification. If you have relevant experience, you may be eligible for module exemptions through Recognition of Prior Certificated Learning (RPCL) or Recognition of Prior Experiential Learning (RPEL). Visit [westminster.ac.uk/rpcl](https://www.westminster.ac.uk/rpcl) for details.

### Students with disabilities

Indicate in your application the nature of the disability or long-term health condition. We will contact you to determine the appropriate support package.

### Fees

Course fees are stated on the individual postgraduate course pages. Also see [westminster.ac.uk/study/fees-and-funding](https://www.westminster.ac.uk/study/fees-and-funding) for further information.

Indicate in your application if you have previously studied at Westminster as you may be eligible for the alumni discount.

### Visas

You may need a visa to study in the UK. You must have accepted an offer of a place and have a Confirmation of Acceptance for Study (CAS) before you apply for your visa.

International students need a Student visa to study for a full-time postgraduate course. You cannot apply for a visa to study part-time. Postgraduate diplomas and certificate qualifications do not allow you to apply for the Graduate Route visa after you complete your course. For comprehensive information, visit [westminster.ac.uk/international/visas-and-advice/visas](https://www.westminster.ac.uk/international/visas-and-advice/visas)

For additional guidance, contact our Course Enquiries Team:  
Live chat: [westminster.ac.uk/study](https://www.westminster.ac.uk/study)  
E: [course-enquiries@westminster.ac.uk](mailto:course-enquiries@westminster.ac.uk)  
T: +44 (0)20 7911 5000 ext 65511

## REPORT AND SUPPORT

The University of Westminster is committed to ensuring that all students can study in a safe and inclusive environment. Our Report and Support platform allows students to make a report if they experience bullying, harassment, discrimination, hate crime or sexual misconduct. You may choose to disclose anonymously or with your contact details. Visit [reportandsupport.westminster.ac.uk](https://reportandsupport.westminster.ac.uk)

Our approach to preventing and addressing harassment and sexual misconduct can be found at [westminster.ac.uk/current-students](https://www.westminster.ac.uk/current-students)

## ENGLISH LANGUAGE DEVELOPMENT

### Pre-sessional English courses

These courses are for international students who need to improve language and academic skills to meet the requirements of postgraduate study. Courses include language development and a focus on discipline-specific studies and are available on campus or online. Students have access to our facilities and libraries.

### Academic English

We offer academic English modules to help you consolidate and improve your proficiency in academic English. We will determine the right level for you during orientation week. For more information visit [westminster.ac.uk/international/english-language-support](https://www.westminster.ac.uk/international/english-language-support)

## ACCOMMODATION

### Student accommodation

This is available for full-time postgraduate students. Most are single study bedrooms with a shared kitchen and are located within easy reach of our campuses. Prices include all utilities.

### Private housing

Options vary widely in price. We provide extensive advice on finding suitable private accommodation. Remember to consider commuting costs when choosing where to live.

Find information on housing and tips on successful accommodation hunting at [westminster.ac.uk/accommodation](https://www.westminster.ac.uk/accommodation)

## IMPORTANT NOTICE

Course details are accurate at time of publication. Check our website for the latest course information and any significant changes. We will keep you informed if a course is cancelled. Some modules, internships or placements may be affected by government restrictions.

Visit [westminster.ac.uk/terms-and-conditions](https://www.westminster.ac.uk/terms-and-conditions) for details.

### Data privacy

We take care to ensure the confidentiality of your application information. Your data will be used and stored in accordance with the University's Data Protection Policy.

To request any of your personal information, contact [dpa@westminster.ac.uk](mailto:dpa@westminster.ac.uk).

Photography by ADP, Simon Armstrong, Stav B, George Baggaley, Andrea Baldrati Photography, Darren Brade, Claudia Cantarini, Megan Carnrite, Adam Carroll, Matt Clayton, Nick Daly, Sara Dominici, Siobhan Doran, David Freeman, Nina Hollington, Khuzista Khan, Rory Lindsay, Michael Maziere, Miya Michael, Joanne O'Brien, Chris Ongsieck, Kacper Rudolf, Nick Turpin, WhiteHok Studios.

Many thanks to all the students, alumni and staff who helped to produce this publication.

Produced by the University of Westminster.  
Printed by Belmont Press Ltd.

Published in August 2025. Information correct at the time of printing. For up-to-date information please check website.



Once you have finished with this prospectus please recycle it.

A charity and a company limited by guarantee.  
Registered office: 309 Regent Street, London W1B 2UW  
Registration number: 977818  
10532/04.25/CH/BP



# INDEX

<b>A</b>	
Academic English courses .....	62
Accommodation for students.....	17, 62
Accounting and Finance courses .....	34
Accounting and Finance MSc .....	34
Advanced Legal Research LLM.....	51
AI, Data and Communication MA.....	53
Air Transport Planning and Management MSc .....	59
Alumni.....	13
Applied Artificial Intelligence MSc.....	41
Applied Biotechnology MSc.....	39
Applying to Westminster.....	61
Architecture, Interiors and Planning courses .....	35
Architecture MA.....	35
Architecture Postgraduate Diploma Professional Practice (RIBA pt III) .....	35
Architecture & Sustainable Heritage MA .....	35
Art, Design and Visual Culture courses .....	37
Art and Emerging Technologies MA .....	37
Art and Visual Culture MA.....	37
Artificial Intelligence and Digital Health MSc.....	39
Audio Production MA.....	54
<b>B</b>	
Big Data Technologies MSc.....	44
Biological and Biomedical Sciences courses .....	39
Biomedical Sciences MSc.....	39
Business and Management courses .....	40
Business and Organisational Psychology MSc.....	40, 57
Business of Film MA.....	49
<b>C</b>	
Careers and Enterprise Service.....	11, 12
Campuses .....	9–10, 65–66
Communication MA.....	53
Computer Science and Engineering courses .....	41
Construction Project Management MSc .....	42
Construction, Surveying and Real Estate courses .....	42
Contact details.....	60
Corporate Finance Law LLM.....	51
Counselling MSc (top-up) .....	57
Counselling PGDip .....	57
Course enquiries .....	60, 67
Course structure.....	25
Creative Writing: Writing the City MA.....	46
Criminology course.....	43
Cultural and Critical Studies MA.....	37, 46
Cyber Security and Forensics MSc.....	41
<b>D</b>	
Data Science and Analytics MSc.....	44
Data Science and Informatics courses .....	44
Data and Marketing Analytics MSc.....	52
Digital Health and Cyberpsychology MSc.....	55, 57
Digital Marketing Management MSc .....	52
Digital Media: Storytelling and Production MA.....	53
Diplomacy and Global Politics MA.....	56
Disability support.....	17, 61
Doctoral Researcher Development Programme .....	28
<b>E</b>	
Economic Policy and Analysis MSc.....	45
English and Creative Writing courses .....	46
English Language and Linguistics MA.....	46
English Language and Literature MA.....	46
English language development.....	21, 61
English Literature: Modern and Contemporary Fictions MA.....	46
Entertainment Law LLM.....	51
Entrepreneurship, Innovation and Enterprise Development MSc.....	40
Entry requirements .....	61
Environmental Sustainability and Data Science MSc.....	39
Event Design and Management MA.....	58
Expanded Photography MA .....	37
<b>F</b>	
Facilities.....	9–10
Fashion Accessories Design MA .....	47
Fashion Business Management MA.....	47
Fashion courses.....	47
Fashion Manufacturing MA .....	47
Fashion Sustainability MA.....	47
Fees.....	61
Film and Television courses .....	49
Film, Television and Moving Image MA.....	49
FinTech with Business Analytics MSc.....	34
Financial support .....	31
Forensic Psychology MSc.....	57
<b>G</b>	
Global Contemporary Art MA.....	37
Global Criminology MA.....	43
Global Development MA.....	56
Global Media MA.....	53
Global Public Health Nutrition MSc.....	55
Global Public Health with Data Science MSc .....	55
<b>H</b>	
Halls of residence.....	17, 62, 65
Health Psychology MSc.....	57
Human Resource Management MA .....	40

<b>I</b>	
Immersive Media Design MA.....	53
Interactive Media Practice MA.....	37, 53
Interior Architecture MA.....	35
International and Commercial Dispute Resolution Law LLM.....	51
International Business and Management MSc.....	40
International Commercial and Corporate Law LLM .....	51
International Development Management MSc.....	40, 45
International Finance and Banking MSc.....	34
International Human Resource Management MA.....	40
International Law LLM.....	51
International Communication – Liaison and Advocacy MA .....	50
International Planning and Sustainable Development MA (with pathways).....	35
International Relations and Democratic Politics MA .....	56
International Relations and Security MA.....	56
International Relations MA.....	56
International student support .....	21
Investment and Financial Risk Management MSc .....	34

<b>L</b>	
Language courses .....	50
Law courses .....	51
Law and Technology LLM.....	51
Learning support .....	17
Legal Practice LLM / PGDip.....	51
Logistics and Supply Chain Management MSc / PGDiP / PGCert.....	59
London life .....	5–8

<b>M</b>	
Management MA .....	40
Map .....	65–66
Marketing Communications MA / MSc.....	52
Marketing courses.....	52
Marketing Management MA / MSc.....	52
Master of Architecture (MArch) (RIBA pt II).....	35
Master of Business Administration (MBA).....	40
Media and Communication courses .....	53
Media and Development MA .....	53
Media Management MA .....	53
Media, Campaigning and Social Change MA / PGDip / PGCert .....	53
Menswear MA .....	47
Menswear with Professional Experience MFA.....	47
Mentoring scheme.....	12
Multimedia Journalism MA / PGDip (Broadcast / Print and Online).....	53
Museums, Galleries and Contemporary Culture MA .....	37
Museums, Galleries and Contemporary Culture with Professional Experience MA .....	37
Music Business Management MA .....	54
Music courses .....	54

<b>N</b>	
Nutrition and Public Health courses .....	55

<b>O</b>	
Online courses.....	46, 50, 55, 57

<b>P</b>	
Pharmaceutical Science MSc.....	39
PhD research degrees.....	28
Politics and International Relations courses .....	56
Postgraduate loans.....	31
Pre-Master's courses .....	21
Pre-sessional English courses .....	61
Private housing.....	17, 62
Professional development.....	13
Professional Writing MA .....	46
Professional Writing with Extended Work Placement MA.....	46
Project Management MSc.....	40
Psychology courses.....	57
Psychology MSc.....	57
Public Policy and Management MA.....	56
Public Relations MA / MSc.....	53

<b>R</b>	
Real Estate Development MSc.....	42
Recognition of Prior Certificated Learning (RPCL).....	61
Research .....	27–30
Research degrees.....	28, 61

<b>S</b>	
Scholarships.....	31
Short courses .....	13, 25
Social Media and Digital Communication MA .....	53
Software Engineering (Conversion) MSc.....	41
Specialised Translation MA.....	50
Specialised Translation with Professional Experience MA.....	50
Sport and Exercise Nutrition MSc.....	55
Study Abroad Programme .....	21
Subject areas .....	33
Support services.....	17–18
Sustainability Management and Innovation MSc .....	40

<b>T</b>	
Teaching English to Speakers of Other Languages (TESOL) MA / Online.....	46, 50
Terms and conditions .....	62
Tourism and Events Management courses .....	58
Tourism Management MA .....	58
Translation and Interpreting MA.....	50
Translation and Interpreting with Professional Experience MA.....	50
Transport and Logistics courses .....	59
Transport Planning MSc / PGDip / PGCert .....	59

<b>U</b>	
Urban and Regional Planning MA.....	35
Urban Design MA / PGDip / PGCert.....	35

<b>W</b>	
Wellbeing and health services.....	17, 18
Working with our business community .....	13

<b>Z</b>	
Zone29.....	11–14



**HARROW**

**1** NORTHWICK PARK

**2** WEMBLEY PARK

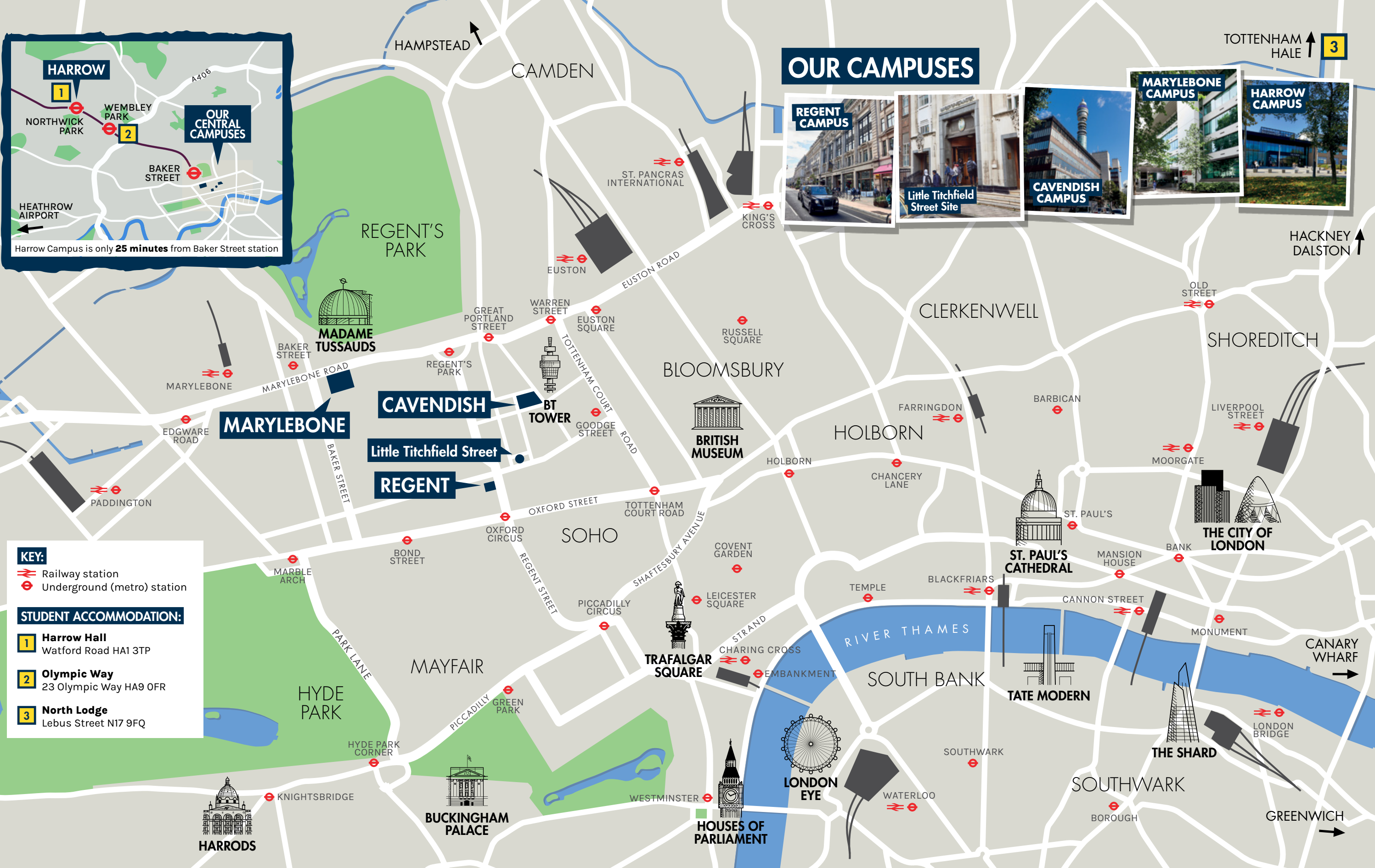
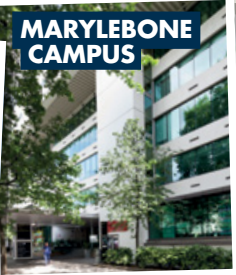
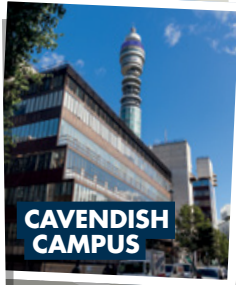
**OUR CENTRAL CAMPUSES**

BAKER STREET

HEATHROW AIRPORT

Harrow Campus is only **25 minutes** from Baker Street station

# OUR CAMPUSES





To find out more, visit us online or in person,  
**[westminster.ac.uk/open-days](https://www.westminster.ac.uk/open-days)**

To find out more, visit us online or in person,  
**[westminster.ac.uk/open-days](https://www.westminster.ac.uk/open-days)**

 [uniofwestminster](#)
 [University of Westminster](#)  
 [uniofwestminster](#)
 [uniwestminster](#)  
 [uniwestminster](#)

**westminsteruniversity.cn**

 **westminsteruni**  **westminsterchina**

 **westminster\_southasia**

**T: +44 (0)20 7911 5000 ext 65511**  
**E: [course-enquiries@westminster.ac.uk](mailto:course-enquiries@westminster.ac.uk)**

To download an accessible digital version of our prospectus, visit **[westminster.ac.uk/pgprospectus](http://westminster.ac.uk/pgprospectus)**