

08-12/2019

RESEARCH COMMUNITIES

FIRST REPORT

A brief overview of the RC work in the first quarter.

University of Westminster, Research Office
research-office@westminster.ac.uk



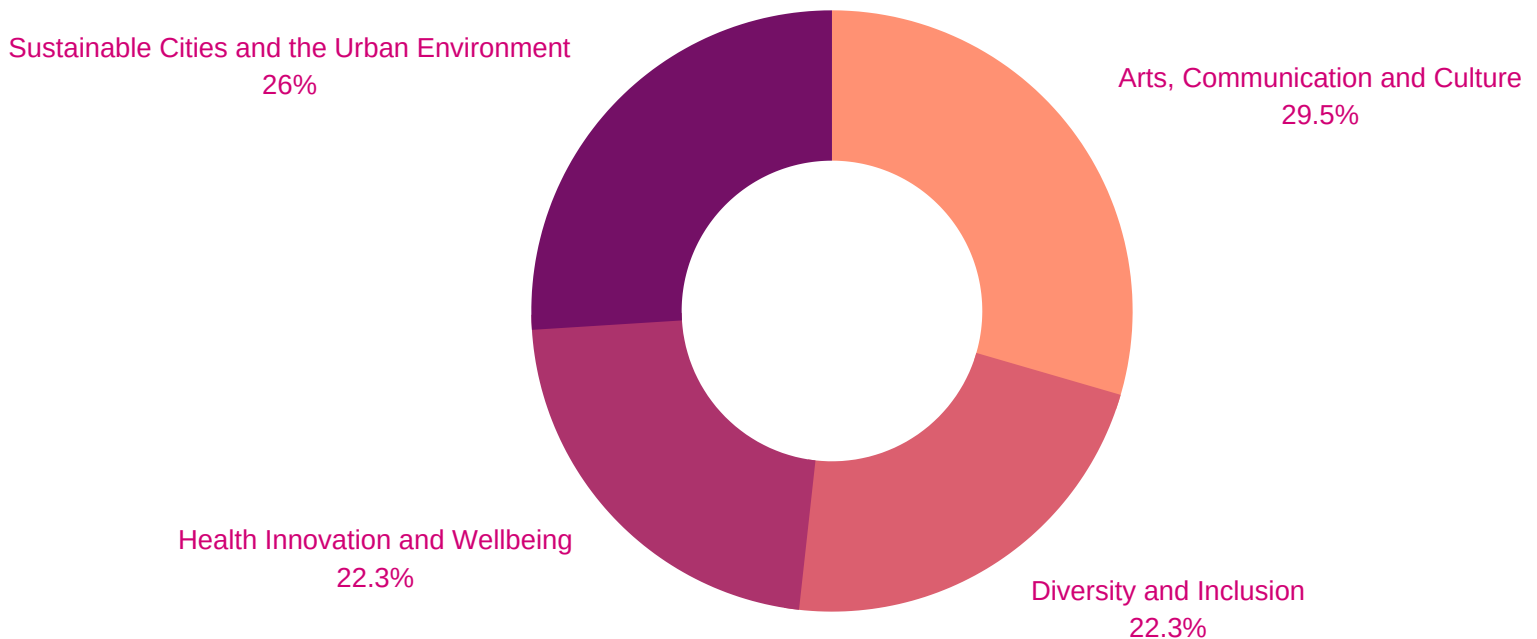
RESEARCH COMMUNITIES

At the beginning of this academic year, the University has launched its four new research communities.

Our four research communities bring together and build on the work of our many strong, existing research groups and centres. The four communities are: Arts, Communication and Culture, Diversity and Inclusion, Health Innovation and Wellbeing, and Sustainable Cities and the Urban Environment.

This report will enlist and detail all the activities that happened during the first 4 months of their existence.

THE RESEARCH OFFICE STARTED A COMMUNITIES MAILING LIST, NOW COUNTING 192 SUBSCRIBERS, AND A BLOG REPORTING ON ALL THE NEWS ABOUT THE COMMUNITIES.



**Mailing list subscriptions by
Communities**

08-09/2019

THE COMMUNITIES

ARTS, COMMUNICATION AND CULTURE

Clare Twomey, Anastasia Kavada

DIVERSITY AND INCLUSION

Miriam Dwek

HEALTH INNOVATION AND WELLBEING

Nina Smyth

SUSTAINABLE CITIES AND THE URBAN ENVIRONMENT

Johan Woltjer

Over the past year, the University has been working to put in place the foundations of the four research communities that were outlined in the University's Research Strategy 2018-2023. The communities were set up with an aim to establish a more focused and interdisciplinary position for the UoW research. After launching the four communities, the University has supported their leads in promoting their strategies and engaging with the academics.

As the communities grow, they play a vital role in enabling researchers from across the University to contribute their expertise across subject boundaries and work with collaborators in new ways. The communities are receiving strategic funding from the University, and the first communities funding call was announced in early September.

The purpose of the funding is to support the pilot projects and support the researchers to apply for bigger external funding. The call was open until mid-November, resulting in the first cycle of seed funding of 30 projects from across the University. Previous to the call, 2 additional projects got communities seed funding to move forward their already existing projects.

With the strategic funding and dedicated support from the Research Office, the University will support the further development of the communities. We will make sure the Communities grow into platforms that will ensure that the knowledge, expertise, passion and energy of our researchers continues to contribute to global debates and solve complex challenges within the context of the external funding environment.

ARTS, COMMUNICATION AND CULTURE

The ACC leads **Anastasia Kavada and Clare Twomey** have worked intensively with their community, meeting individuals to help develop their funding applications. With the support of the RO, the leads work with the ACC funded researchers to help them complete their projects on time and to ensure the development of their external funding applications. The Community invested in writing retreats to help ensure focused writing time in most of the applications where this is relevant.

The ACC community have been invited by Peter Bonfield to use the Gallery Café as a space for ACC to showcase their interests through exhibitions and discussions. To this end, two exhibitions have been undertaken that drew together our community of researchers. Future events for the Gallery Café are now planned for the coming year, including an exhibition on the environment (May 2020) and another one on migration (June 2020).

The diversity of the projects currently supported by the ACC seed funding reflects the themes that were identified in the launch event; **Art & Interdisciplinary Research, Futures, Cultural platforms, Migration, Democracy and Narratives of entanglement**. The aim is to deepen the engagement with these emerging themes and, with the help of the RO in horizon scanning and spotting funding opportunities, to develop funded research that is cutting-edge and world leading.

The Community facilitator is Alan Yabsley.





DIVERSITY AND INCLUSION

The work of the Diversity and Inclusion research community, led by **Miriam Dwek**, seeks to focus on research that explores what inclusion really means, trying to understand the issues that can enable or prevent particular groups from taking a full part in society as citizens in a global world, employees, students, and members of families and communities.

In the spirit of inclusivity and diversity, the Community's work will be tailored according to the already existing research efforts and needs, thus promoting **researchers whose work focuses on understanding and tackling the issues of exclusion and inequality**. Regardless of the approach (law, policy, health, economics, social sciences, communications, art), our primary aim is to support researchers across the University and to **forge new interdisciplinary collaborations with the aim of successfully promoting inclusivity as one of the crucial components of every scientific, political and broader social effort**.

The Community will organise bi-monthly meetings with the PIs of the projects we are supporting, and these events will be open for anyone to attend and join the discussion, bringing in their individual and unique feedback to the overall work and strategy of increasing diversity and inclusion at the UoW.

The Community facilitator is Rafaela Tripalo.

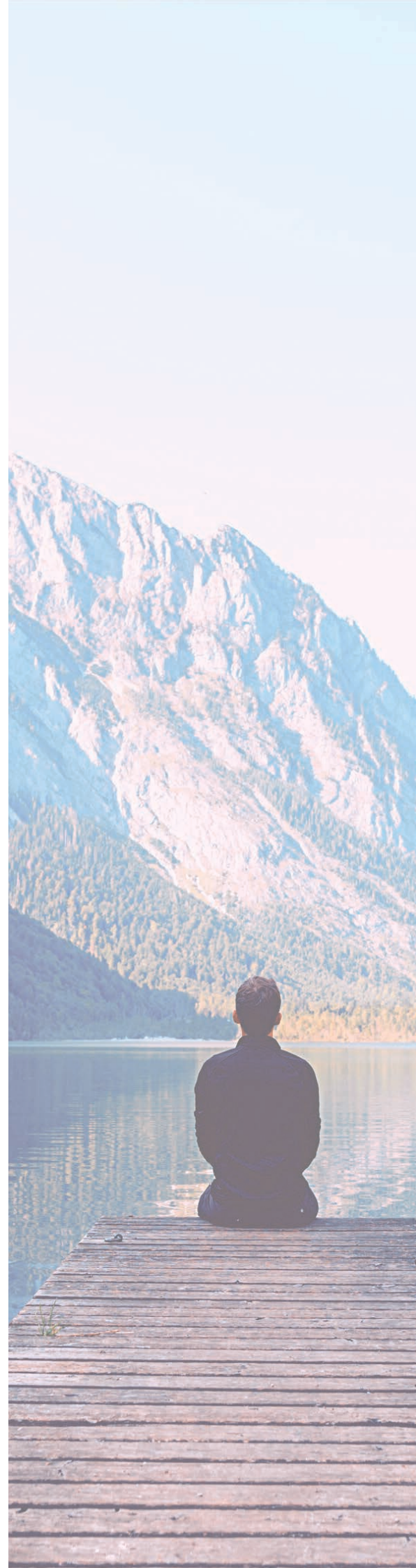
HEALTH INNOVATION AND WELLBEING

The Health Innovation and Wellbeing Community, led by **Nina Smyth**, aims to support and enhance the health and wellbeing research that is already going on at the University, as well as to provide assistance to the researchers to make new collaborations across the University and develop their research profile. The Community aims to support research pertinent to **global health & wellbeing challenges, promoting long life health and wellbeing, preventing disease, and informing innovative health care delivery.**

Supporting and encouraging interdisciplinary research is a particularly exciting and important endeavour, especially seeing that interdisciplinary, and with it, cross-disciplinary, multidisciplinary, and trans-disciplinary research have occupied the scholarly debate, and more often than not show the tendencies of thinking outside the box, progress, modernity and innovation. We are proud and excited that the Health Innovation and Wellbeing community will actively work to support and promote early career researchers, especially focusing on encouraging and facilitating interdisciplinary research on different levels. The HIW community has already started working on engaging with the early career researchers by organising a workshop on interdisciplinarity in collaboration with the Health Innovation Ecosystem, which was attended by PhD students and early career researchers from across all the UoW colleges.

The Community will keep working towards developing **tailor-made activities and events** that would be beneficial for the researchers in different career stages, building **strong and structured networks and supporting innovative work** that will benefit the University's health innovation and wellbeing research and activities.

The Community facilitator is Rafaela Tripalo.





SUSTAINABLE CITIES AND THE URBAN ENVIRONMENT

The Sustainable Cities and Urban Environments Community, led by **Johan Woltjer**, aims to support the development of **interdisciplinary research on focused 'sustainability' and 'urban' themes**. Building the SCUE community has involved clarifying UoW's research profile on these themes. This has involved **profile mapping, disseminating information about the community, and determining a strategic position in relation to global agendas**.

Developing this initial undertaking has involved working with the community to **build coalitions around key themes, a great example being inclusive, adaptive and resilient cities and their impact on wellbeing**.

Colleagues from across the institution have research interests in other promising themes including sustainable communities and sustainable urbanism and habitability. **Sustainability with a focus on natural resources, disasters, and conflict** are also key topics for UoW researchers, as are **sustainable mobility, infrastructures and accessibility**. Urban-rural linkages and **regional development** as topics of study are allied with a complementary interest in **heritage, identity and place making**.

The SCUE community will work to **strengthen capacity for research, engagement activities (incl. travel and workshop events) and dissemination of research**.

Ongoing activity will focus on developing projects and portfolios including anticipating and developing funding options, research networking and collaborative projects, and grant-writing, as well as organising a **conference on Sustainability in May 2020**.

The Community facilitator is Alan Yabsley.

09-10/2019

A TOTAL NUMBER OF 218 PEOPLE
ATTENDED THE FIVE LAUNCH
EVENTS AND PARTICIPATED IN
NETWORKING AND STRATEGY
CONVERSATIONS

LAUNCH EVENTS

The **Communities were launched** at the event on September 17th, that was attended by 117 participants, coming from all the UoW schools. The he guests were greeted by the Vice-Chancellor, Peter Bonfieldm and the strategy presented by Andrew Linn, the PVC for Research. After the brief introductions by all 5 community leads, the attendees were invited to network over refreshments.

The big launch event was followed by the four individual ones, starting with the **Health Innovation and Wellbeing**, which prepared a VITAE researcher developer workshop for the 34 attendees, which helped map the researchers' needs and direct the Community's strategy. The school engagement breakdown was: Applied Management (1), Arts (1), Computer Science and Engineering (3), Humanities (4), Life Sciences (13), Management and Marketing (1), Organisations, Economy and Society (1),

09-10/2019



LAUNCH EVENTS

Social Sciences (6), Professional Services (4).

The next launch was the **Diversity and Inclusion**, where the Community lead Miriam Dwek introduced the Community strategy and goals, and welcomed 5 different researchers from across the University to talk about their work and how it relates to different aspects of diversity and inclusivity. The event was attended by 25 participants: Architecture and Cities (2); Computer Science and Engineering (2); Humanities (3), Law (1), Organisations, Economy and Society (1), Social Sciences (5), Professional Services (8).

The DI Community organised a **follow-up workshop**, which saw attendees from all colleges. The round-table discussion focused on health inequalities, language/ communication and under-represented communities.

Sustainable Cities and the Urban Environment research community's launch focused on presenting the current state of the research done at the University along urban and sustainability themes, as well as an overview of potential funders in this area. It was attended by 47 participants: Applied Management (2); Architecture and Cities (34);

09-10/2019



LAUNCH EVENTS

Computer Science and Engineering (2);
Humanities (2); Social Sciences (2);
Professional Services (5).

Arts, Communication and Culture research community's event revolved around individual presentations and panel discussion with internal and external speakers, exploring opportunities and challenges of working across disciplines. The participants were invited to take part in research mapping exercise, identifying areas of commonality and thematic groups interested in working together.

The intensive workshop drew together a genuine interest in research and scholarly intent.

The event was attended by 56 participants: Architecture and Cities (3); Arts (12); Computer Science and Engineering (2); Humanities (11); Law (4); Life Sciences (1); Media and Communications (11); Social Sciences (5); Professional Services (7).

The ACC is planning activities and workshops around each theme to emerge from the workshop, aiming to hold one event for at least three thematic areas by the end of this academic year.



FIRST OUTREACH

After the individual launch events, all the research leads put their efforts into meeting with the academics across the University, trying to pinpoint ways in which collaborations could be forged. The leads had **over 80 individual meetings in October**, hearing about research happening at the University, and encouraging the researchers to apply to the Communities funding call.

Moreover, the ACC community set up an exhibition at Regent St Café Gallery, which was on 16/10/19 – 27/11/19. The second exhibition opened on December 11th with an ACC discussion on 'Curation as Research'. Future events for the Gallery Café are planned for the coming year, including an exhibition on the environment (May 2020) and another one on migration (June 2020).

THE LEADS, WITH THE SUPPORT FROM THE RESEARCH OFFICE, HAD MORE THAN 80 INDIVIDUAL MEETINGS TO ENCOURAGE RESEARCHERS TO JOIN THE COMMUNITIES AND APPLY FOR COMMUNITY FUNDING.

11/2019

COMMUNITIES FUNDING CALL - APPLICATION PROCESS

59

**Total number of
applications across
the communities**

15

**Public Engagement
stream applications**

78%

**Amount requested for
research development
- the other 22% for
public engagement**

£559,448

**Total amount
requested**

30

AWARDS MADE

52%

SUCCESS RATE

4

**PUBLIC
ENGAGEMENT**

4

**CO-FUNDED
PROJECTS**

A stack of British coins, including a £2 coin, is placed next to a metal ruler on a document. The text '£220,221' is overlaid in large, bold, pink letters.

£220,221

**Total amount
awarded**

11-12/2019

**COMMUNITIES
FUNDING CALL -
SELECTION**

30 awards have been made totaling £220,221 across the Communities. 4 awards were made to pubic engagement projects, with the rest being in the research development stream. The majority of projects are being funded by one community but there are 4 that are being co-funded, in these cases a single community has been assigned as the “home” for the project. Two projects were awarded funding before the Funding Call went out, one in DI Community, and one in SCUE Community.

College/School	Awards
College of Design, Creative and Digital Industries	14
Architecture and Cities	7
Computer Science and Engineering	1
Westminster School of Media and Communication	4
Westminster School of Art	2
College of Liberal Arts and Sciences	15
Humanities	3
Life Sciences	4
Social Sciences	8
Westminster Business School	1
Applied Management	1

APPLICATIONS
BY COLLEGES
AND SCHOOLS
(PIs)

11-12/2019

ARTS, COMMUNICATION AND CULTURE

John Beck, Anastasia Kavada, Christian Fuchs, Neal White: Everyday Futures

Shezad Dawood, Jeffrey Ferguson: Leviathan: The Rocky Shore

Alison Eardly, Peter Ride: We are Anacostia: Exploring place-identity, belonging, memory and the relationship between the Anacostia Community Museum and its local communities

Christian Fuchs, Andrew Lockett, Leigh Wilson: Publishing and the Commons

Anastasia Kavada, Lucy Bond, Neal White, Doug Specht: Climate Change Storytelling

Michael Mazière, Davide Deriu: VERTIGO – Falling Away

Guy Osborn, Matt Morrison: A Series of Disruptive Events

Tessa Peters, Christie Brown, Clare Twomey: Platforms for Culture and Community

Roza Tsagarousianou, Federica Mazzara: Migration, Media and Voice

DIVERSITY AND INCLUSION

Daniel Conway, How Wee Ng: The Cultural Translation of Rights and Freedoms: LGBTQ+ Culture, Democracy and Activism in Hong Kong

Coral Dando, Sally Atkinson-Sheppard: County lines exploitation: Being a victim and an offender and reintegrating back into society.

Stephen Getting, Vedia Can: Therapeutic potential for the modulation of the melanocortin system—a translational study.

Tom Nadarzynski, Damien Ridge, Epaminondas Kapetanios: A scoping review of studies on the public and health professionals' perspectives and engagement with Artificial Intelligence (AI) services in healthcare, with a focus on marginalised social communities.

Dana Rosenfeld, Doug Specht: 'You don't look sick': Suspicion, assessment, and surveillance of people seeking disability benefits in the UK

Pinar Uysal Onganer, Alistair Barr, Miriam Dwek, Ximena Montano Hernandez, Tony Madgwick, Adele McCormick, John Murphy, Nina Porakishvili, Nadege Presneau, Claire Robertson, Kalpana Surendranath, Emanuela Volpi: Cancer Research Symposium and Public Engagement Lecture

11-12/2019

WINNING PROJECTS

HEALTH INNOVATION AND WELLBEING

Alison Fixsen, Damien Ridge: Pathways and barriers to social prescribing: Co-producing initiatives which address social and health inequalities in urban areas.

Stipo Jurcevic, Elizabeth Buckland, Alastair Barr, Pinar Uysal Onganer, Bradley Elliott: The effects of exercise on platelet activation and their capacity for tissue repair

Jonathan Kasstan, Petros Karatsareas, Damien Ridge, Dana Rosenfeld: Healing through language? A mixed-methods study into Linguistic Discontinuity and wellbeing in UK-based migrant contexts (The 'HOLDING Study')

Catherine Loveday, Sally-Anne Gross, George Musgrave: Why Music Can Make You Sick – An Interdisciplinary Approach

Nina Smyth, Carly Wood: Exercise in natural environments: a gateway to healthier communities

Pinar Uysal-Onganer, Adele McCormick: Quantification of Human Endogenous Retroviruses (HERVs) and microRNAs (miRs) expression levels in Human Pancreatic Adenocarcinoma frozen tissue as a potential biomarker of the disease.

SUSTAINABLE CITIES AND THE URBAN ENVIRONMENT

Ipshita Basu, Ripin Kalra, Andreas Philippopoulos-Mihalopoulos, Federica Mazzara: Urban Mobility and the Margins: Enabling an inclusive and equitable approach within South Asia's urban mobility infrastructure

Lindsay Bremner, Neal White: Monsoon

Maria Christina Georgiadou, Paolo Cascone: Grassroots approaches for incremental upgrading of informal settlements in African cities

Anne Graham, Frances Kremarik: Ageing Air Passengers: Supporting Inclusion within the Air Transport Door-to-Door Journey

Krystallia Kamvasinou, Rachel Aldred, Nina Smyth: Reuse of urban transport infrastructures as green space for people's wellbeing

Johannes Novy, Ilaria Pappalelore, Andrew Smith, Adam Eldridge: Sustainable Metropolitan Tourism Network (SMeT)

Enrica Papa, Pieter Verdegem, : Digital Innovation for Sustainable Urban Mobility

Andrew Smith, Guy Osborn, Goran Vodicka: Programming public space: festivity / diversity / inclusivity)

Guilio Verdini, Terry Lamb, Johan Woltjer, Roudaina Alkhani, Paolo Cascone, Nicolas Beech, Michael Neuman: De-colonising urban and architectural curricula to enable effective climate actions

11-12/2019

WINNING PROJECTS

DETAILED REPORTS OF THE FUNDING CALL

ARTS, COMMUNICATION AND CULTURE

The Arts, Communication and Culture Community leads, Anastasia Kavada and Clare Twomey, along with meeting with the individual researchers and artists, also set up the first Community exhibition in Regent Street. The researchers and artist were encouraged to apply for funding, and were offered support and help by the leads and the Research Office.

The Community received 21 applications, out of which 15 were submitted exclusively to the ACC Community, 4 overlapped with the DI Community, 1 with the HIW Community and 1 with the SCUE Community. Eight applications went towards the public engagement stream. The total funding requested was £167,035.72, out of which £58,804.24 was for public engagement and £108,231.48 for research development.

Each application was scored by three referees. The scoring criteria were 'Fit to scheme', 'Impact/future funding potential' and 'Alignment to Research Community'.

Eleven projects were successfully funded, this number including four joint applications with HIW Community. Total amount awarded was £53,688.97. Out of the 11 projects, 6 were funded through research development stream and 5 through public engagement. The community is co-funding 4 projects, one with DI, one with HIW and two with SCUE.





DIVERSITY AND INCLUSION

After the launch event, the Community lead, Miriam Dwek met with 22 academics to discuss the ways in which they could get involved with the Community, and what kind of support they can expect.

The DI community received 14 applications for funding, which amounted to £105,388.82. Out of the 14, 3 applications were submitted exclusively to the DI Community, while 6 overlapped with Health Innovation and Wellbeing, 4 with Arts, Communication and Culture, and 1 with Sustainable Cities and the Urban Environment. Two applications were submitted to the public engagement stream, with the total sum £6,297.72. The other twelve applications went forward the research development stream, totaling in £99,091.10 of funds requested.

The applications were reviewed by three referees - the Community lead and two additional academics. The scoring criteria were 'Fit to scheme', 'Impact/future funding potential' and 'Alignment to Research Community'.

Six applications got awarded funding, out of which one will be co-funded with the ACC Community. One additional project was funded before the call was published and is already in its second phase. The total money awarded is £51,026.68, and all the awarded projects go within the research development stream.

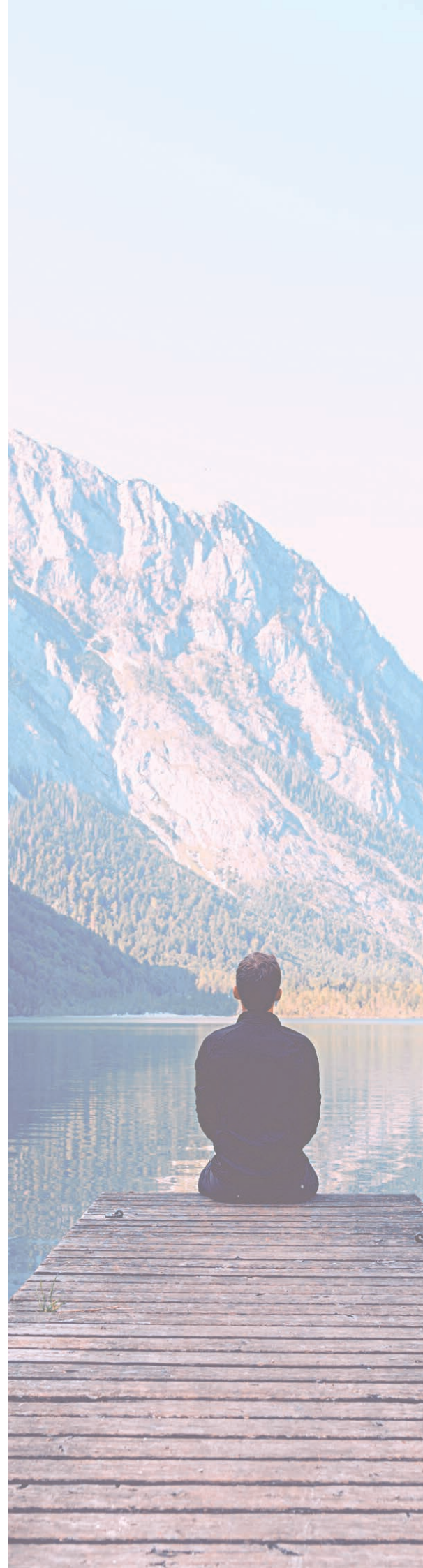
HEALTH INNOVATION AND WELLBEING

Health Innovation and Wellbeing Community directed its strategy towards supporting the development of early career researchers, all the while providing the platform and support for the researchers across the University who work on topics related to health, innovation and wellbeing. The Community lead, Nina Smyth, met with 25 academics ahead of the funding call, discussing potential collaborations and advising on application process.

The Community received 22 applications, out of which 15 were submitted exclusively to the HIW Community, 4 overlapped with the DI Community, 2 with the SCUE and 1 with the ACC Community. Two applications went towards the public engagement stream. The total funding requested was £244,464.75, out of which £6,888.00 was for public engagement and £237,576.75 for research development.

Since the applications came across a wide range of disciplines, the Community lead asked senior academics from the respective fields to review them. Each application was reviewed by three different independent reviewers. The scoring criteria were 'Fit to scheme', 'Impact/future funding potential' and 'Alignment to Research Community'.

Six applications were awarded funding, and the total sum awarded was £58,545.28. One project will be co-funded with the ACC Community. All the awarded projects come under the research development stream. Out of the six projects,





SUSTAINABLE CITIES AND THE URBAN ENVIRONMENT

The Community lead, Johan Woltjer, arranged for meetings with numerous researchers from the University, scoping the research topics and mapping out a way the Community can go forward. All the researchers were encouraged to apply for seed funding to advance their research projects.

The Community received 17 applications, out of which 13 were submitted exclusively to the SCUE Community, 1 overlapped with the DI Community, 2 with the HIW Community and 1 with the ACC Community. Three applications went towards the public engagement stream. The total funding requested was £203,672.71, out of which £23,900 was for public engagement, and £179,772.71 for research development

Each application was scored by three referees. The scoring criteria were 'Fit to scheme', 'Impact/future funding potential' and 'Alignment to Research Community'.

The Community will fund 10 projects, including 2 co-funded projects with the ACC. Out of the 10 funded projects, 6 come under the research development funding stream, while 4 projects go under the public engagement stream. The total awarded sum is £51,452. One additional project was awarded funding before the Funding Call went out.

CONFLICT GENERATED DIASPORA: BETWEEN SELF-DETERMINATION AND SECURITISATION

This project's aim is to develop an interdisciplinary theoretical and methodological framework to study the impact of interstate diplomacy and national security policies on the everyday lives of Conflict Generated Diaspora. The conflict generated diaspora often come from countries where struggles for self-determination, a legally recognised right, have escalated into geopolitical conflicts. The S&S pilot study builds on three consultative workshops with Kurdish, Tamil and Somali communities organised by Campaign Against Criminalising Communities (CAMPACC) and led by Professor D'Souza in London in 2015.

The purpose of the workshops was to share experiences of the three communities of securitisation policies in the UK and the struggles in their homeland. The workshops suggested many ordinary members of the three communities felt caught between interstate diplomacy about struggles for self-determination in their home state and national security concerns of the UK, the host state. Building from these consultations, the S&S pilot project seeks to critically explore the ramifications of these perceptions of permanent insecurity for the meaning of democracy, rule of law, civic participation, and the wellbeing of communities.

The project particularly attends to women who are most affected by state policies. The pilot project compares the experiences of groups in Canada and the UK. The study will consult experts, professionals, NGOs and community organisations who work with conflict generated diaspora in any capacity. The consultations are designed to draw out problems arising from the crossings of diverse interests, actors and institutional, legal, political and disciplinary partitions that impact the lives of the groups in question.

The project is done in collaboration with Open University, McGill University and University of British Columbia.

The first workshop in Vancouver was held on 29 November 2019. Fifteen participants from women's organisations, lawyers, psychologists, food banks, youth workers, trade unions and community groups attended the workshop. The second workshop will be held on 05 March 2020 in London.

The pilot study is funded by the Diversity and Inclusion Community in University of Westminster and the Canada Research Chair in Social Movement Learning and Knowledge Production, McGill University.

The image features a row of silhouettes of diverse individuals, including men and women of various ages and builds, walking from left to right. They are carrying bags and backpacks, suggesting they are travelers or migrants. The background is a vibrant sunset or sunrise sky with soft, colorful clouds in shades of orange, yellow, and blue. A large, dark teal rectangular box is superimposed over the center of the image, containing the text 'DIVERSITY AND INCLUSION - AN ONGOING PROJECT' in a bold, orange, sans-serif font.

**DIVERSITY AND INCLUSION -
AN ONGOING PROJECT**



NEXT STEPS

SETTING UP THE FUNDED PROJECTS

The Community leads, facilitators and the Research Office will set up ways of supporting the 32 projects that have received seed funding.

ORGANISING EVENTS

The Community leads and facilitators will organise workshops, speeches and writing retreats in order to develop and support their research strategies.

ENGAGING WITH THE RESEARCHERS

The Community leads and facilitators will reach out to the researchers across the University and encourage them to participate in the Communities' activities.

PUBLISHING THE NEXT FUNDING CALL

The new funding call will go out in spring, providing new opportunities for the prospective projects across the University.

AUTHORS

COMMUNITY LEADS

ANASTASIA KAVADA
CLARE TWOMEY
MIRIAM DWEK
NINA SMYTH
JOHAN WOLTJER

RESEARCH OFFICE

NICOLA HAINES
RAFAELA TRIPALO
ALAN YABSLEY

STAY IN TOUCH

RESEARCH-OFFICE@WESTMINSTER.AC.UK
R.TRIPALO@WESTMINSTER.AC.UK
A.YABSLEY@WETSTMINSTER.AC.UK

C.TWOMEY@WESTMINSTER.AC.UK
A.KAVADA@WESTMINSTER.AC.UK
M.DWEK@WESTMINSTER.AC.UK
N.SMYTH@WESTMINSTER.AC.UK
J.WOLTJER@WESTMINSTER.AC.UK

BLOG

BLOG.WESTMINSTER.AC.UK/RESEARCHOFFICE/

MAILING LIST

BIT.LY/2R09ETZ

TWITTER

TWITTER.COM/UOW_RESEARCH