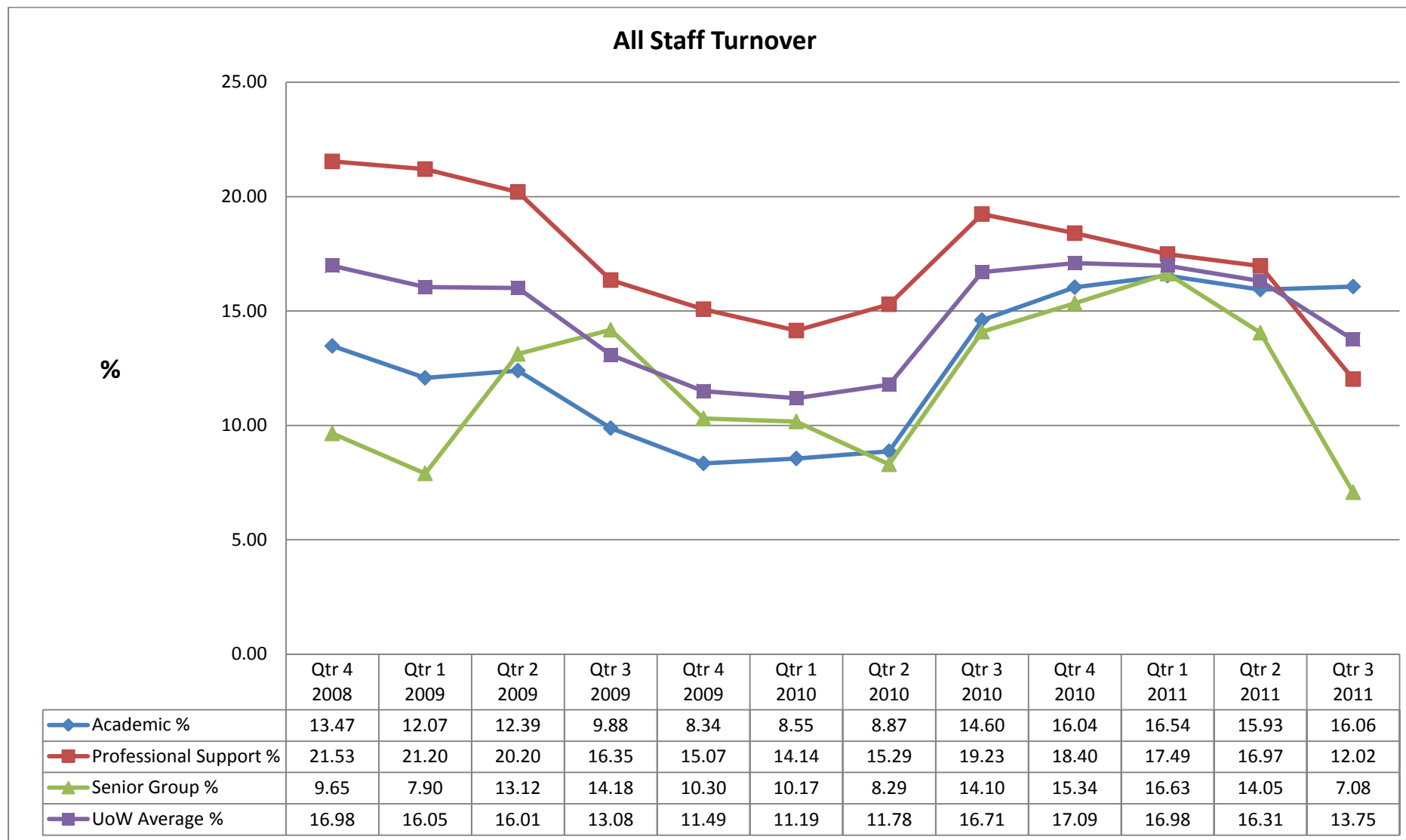


Graph 1a – All Turnover



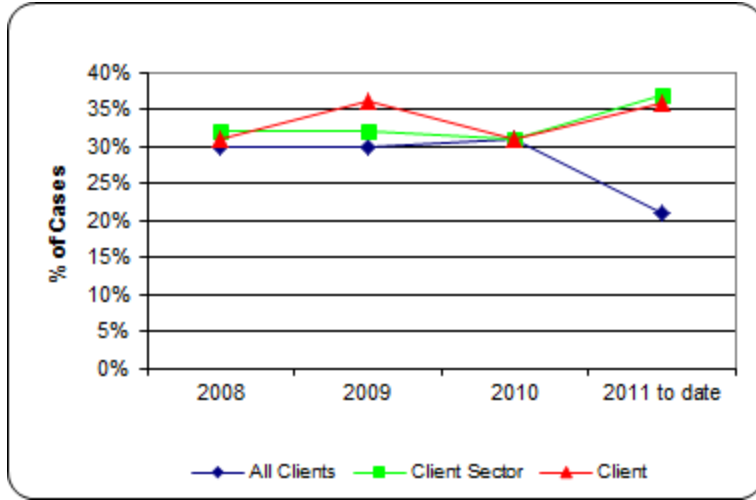
Graph 2a: Occupational Health Referrals

	1 Infections	2 Cancer/Malignancy	3 Haematological	4 Endocrine/Metabolic	5.1 Stress	5.2 Psychotic Illness	5.3 Anxiety	5.4 Depression	5.5 Alcohol & Drug Dependence	5.6 Other Psychiatric / Mental Health	6 Neurological	7 Ophthalmological	8 Audiological	9 Cardiovascular & Cerebro-vascular	10 Respiratory	11 Gastro-Intestinal	11.1 Dental	12 Dermatological	13.1 Back Pain	13.2 Neck Pain	13.3 Fracture	13.4 Lower limb Disorder	13.5 Upper Limb Disorder	13.6 Arthritis	13.7 Rheumatism	13.8 Other M/ Skeletal and Injuries	14 Genitourinary	15 Gynaecological / Pregnancy	17 Congenital Malformations.	18 Other	18.25 CFS / Fibromyalgia / ME	19 Injuries & Poisoning	20 Unspecified Surgery / Post Op.	21 Flv/Healthy	23 WSA	Total	
Totals	1	1	1	1	4	3	3	1	0	0	0	0	0	1	1	0	0	0	1	0	1	1	0	0	0	0	0	0	1	0	1	0	0	1	0	0	23*
Subtotal (% of total)					11 (48%)					3 (13%)																											
Work Related (% of subtotal)					8 (73%)					1 (33%)																											
Covered by Disability Legislation (% of subtotal)					4 (36%)					1 (33%)																											

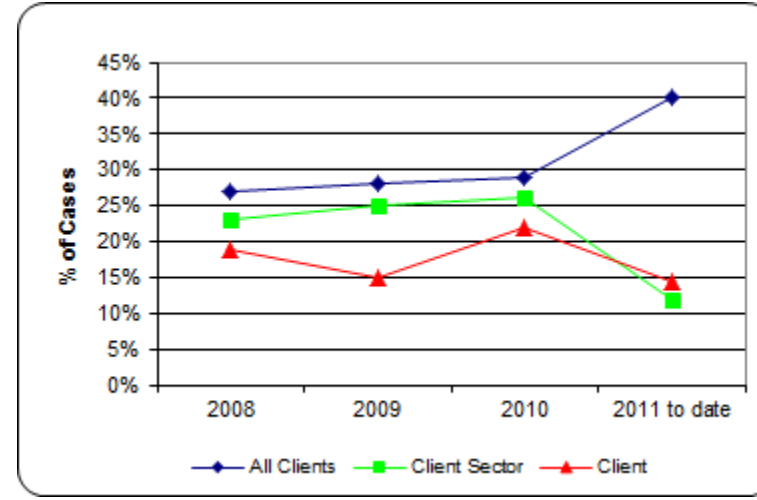
* Six cases remain open and two were cancelled.

Graph 2b

Mental Health Disorders



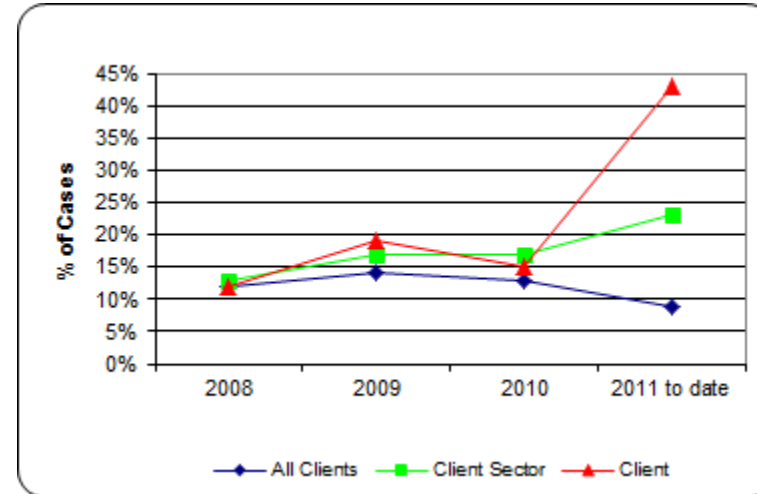
Musculoskeletal Disorders



Disability Legislation Cases



Work Related Cases



Graph 5 – Age % of staff per Age Category

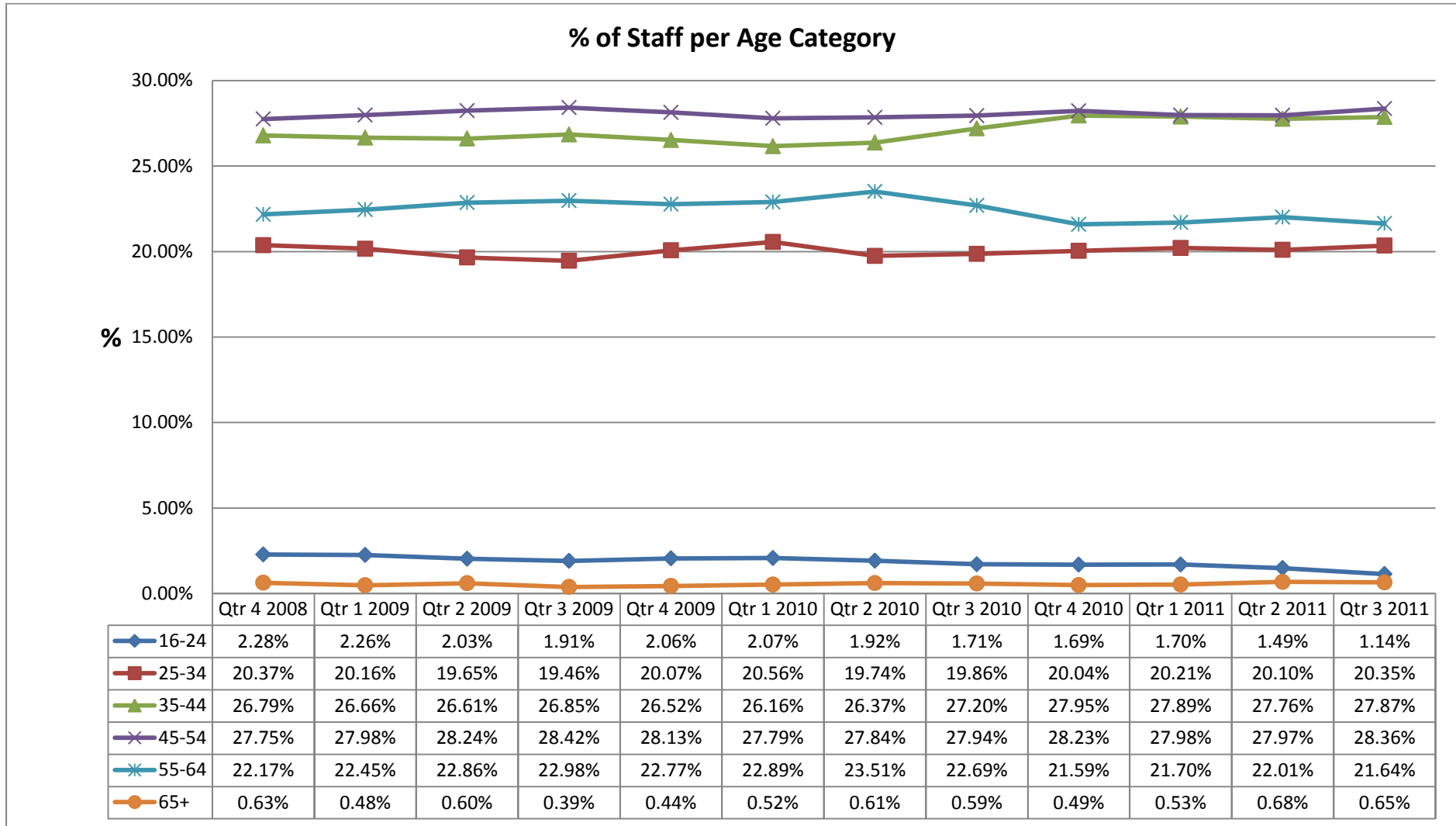


Chart 8: Religion and Belief and Sexual Orientation

	Academic	Professional Support	Senior Group	Total
Buddhist	0.34%	0.34%	1.05%	0.37%
Christian	6.82%	9.89%	17.89%	8.83%
Hindu	0.34%	1.24%	0.00%	0.75%
Jewish	0.56%	0.79%	1.05%	0.69%
Muslim	0.56%	1.35%	0.00%	0.90%
No Religion	6.94%	9.21%	18.95%	8.62%
Other	0.34%	0.45%	0.00%	0.37%
Prefer not to say	2.13%	2.58%	5.26%	2.50%
Sikh	0.00%	0.45%	0.00%	0.21%
Unknown	81.99%	73.71%	55.79%	76.74%

	Academic	Professional Support	Senior Group	Total
Buddhist	3	3	1	7
Christian	61	88	17	166
Hindu	3	11	0	14
Jewish	5	7	1	13
Muslim	5	12	0	17
No Religion	62	82	18	162
Other	3	4	0	7
Prefer not to say	19	23	5	47
Sikh	0	4	0	4
Unknown	733	656	53	1442
Total	894	890	95	1879

	Academic	Professional Support	Senior Group	Total
Bisexual	0.45%	0.34%	0.00%	0.37%
Gay Man	0.67%	1.24%	3.16%	1.06%
Gay Woman/Lesbian	0.11%	0.22%	0.00%	0.16%
Heterosexual/Straight	15.66%	23.03%	33.68%	20.06%
Other	0.11%	0.22%	0.00%	0.16%
Prefer not to say	2.13%	2.02%	5.26%	2.24%
Unknown	80.87%	72.92%	57.89%	75.94%

	Academic	Professional Support	Senior Group	Total
Bisexual	4	3	0	7
Gay Man	6	11	3	20
Gay Woman/Lesbian	1	2	0	3
Heterosexual/Straight	140	205	32	377
Other	1	2	0	3
Prefer not to say	19	18	5	42
Unknown	723	649	55	1427
Total	894	890	95	1879